

Schedulize

Visualize your Schedule.

A scheduling platform for early stage service based businesses.

Early-Stage Service Based Businesses

Entrepreneurs need to focus on scaling their business. Not repetitive scheduling.

Currently, early service businesses are wasting hours scheduling with clients.

Schedulize.

Visualize your Schedule.

Integrate directly to your website.

A client facing solution to solve the monotonous back and forth with clients.

An online service to allow your clients to directly schedule an appointment for your schedule.

Maximize your time with Schedulize.

Michael Shockley, current user of Schedulize:

To: Mike Shock

[Details](#)

Hey, out of curiosity, any clue as to how much time the appointment scheduler has saved you?





A LOT

time and stress

lol

If I had to quantify it I'd have to figure out a calculation but beyond measurable imo

Competitive Analysis : Pricing Model

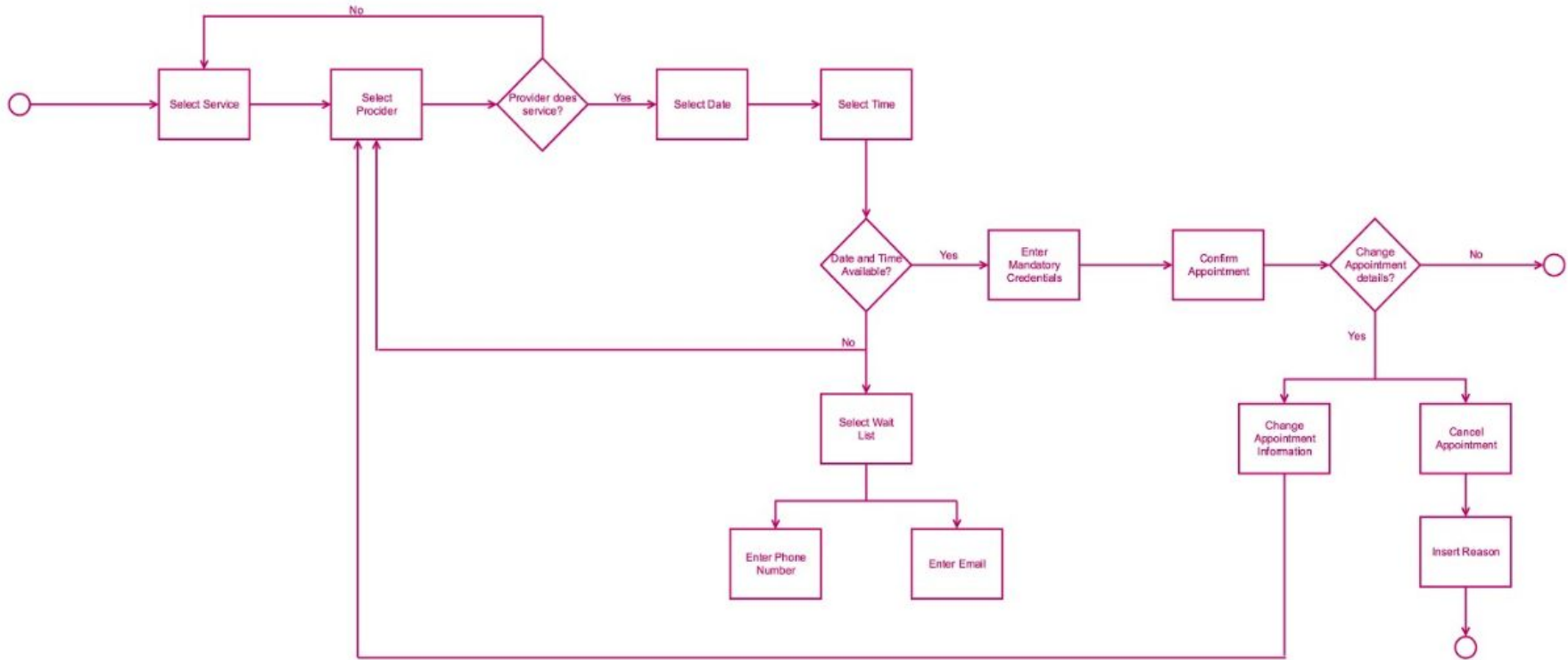
	 Booksy	 Style Seat	 Sqaureup	 SCHEDULE
Sole Provider (Monthly)	\$30	\$35	\$30	\$0
Unlimited Providers (Monthly)	\$120	N/A	\$90	\$75

Competitive Analysis : Features & Advantages

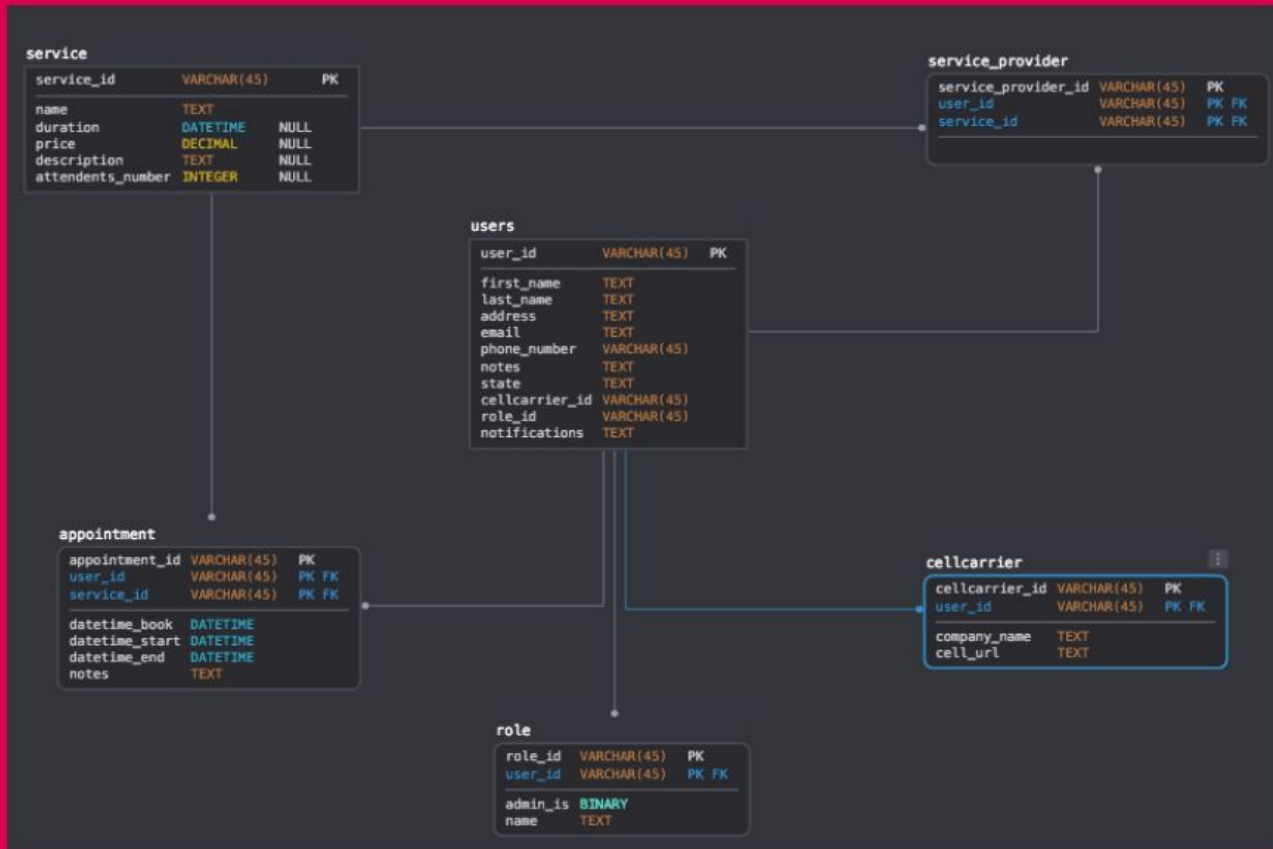
- **Price Point**
 - Focus on early business stage / local businesses into scalable platform
- **Google Calendar Integration**
- **Able to view previous client appointments**
- **Simple Integration & Low Maintenance Costs**



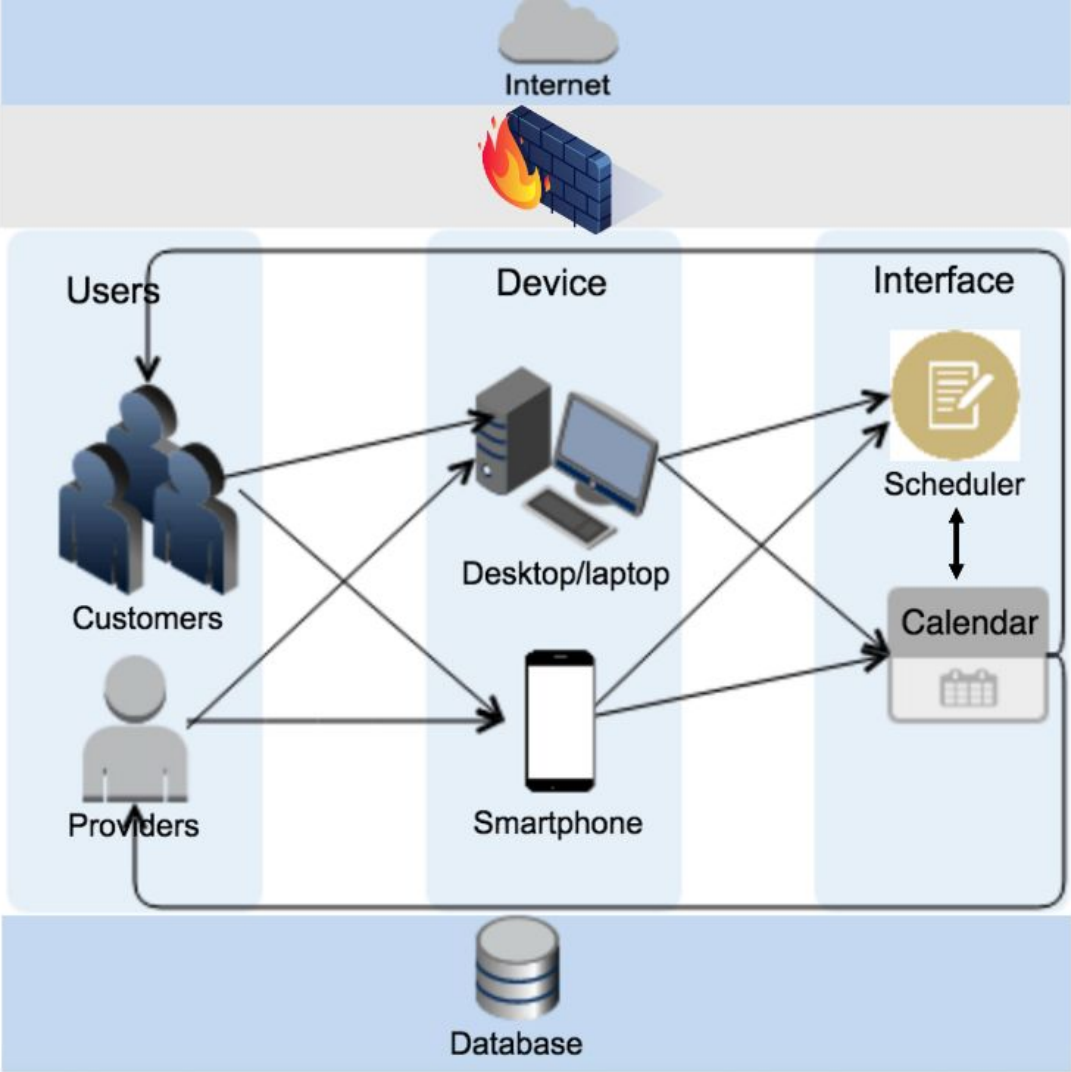
Process Diagram



Data Model



Enterprise Architecture



Financials

Sole Provider Usage	\$0.00			
Each Additional Provider (Monthly)	\$10.00			
Unlimited Provider Usage (Monthly)	\$75.00			
Sources of Revenue	Year 1 Total	Year 2 Total	Year 3 Total	
Sole Provider Usage	\$0.00	\$0.00	\$0.00	
Additional Providers (Monthly)	\$8,600.00	\$18,920.00	\$29,260.00	
Unlimited Provider Usage (Monthly)	\$4,500.00	\$11,700.00	\$18,900.00	
TOTAL REVENUE	\$13,100.00	\$30,620.00	\$48,160.00	\$91,880.00
Expenses				
Development for Scalability	\$0.00	\$0.00	\$0.00	
Hosting for our website	\$60.00	\$60.00	\$60.00	
Domain for our website	\$20.00	\$20.00	\$20.00	
Salaries (Developer On-Call / Maintenance)	\$5,000.00	\$8,500.00	\$10,000.00	
Advertising & Promo	\$1,000.00	\$1,000.00	\$1,000.00	
Legal & Accounting	\$3,900.00	\$1,200.00	\$1,200.00	
LLC	\$125.00	\$0.00	\$0.00	
Taxes	\$5,240.00	\$12,248.00	\$19,264.00	
TOTAL EXPENSES	\$15,345.00	\$23,028.00	\$31,544.00	\$69,917.00
OPERATING PROFIT	-\$2,245.00	\$7,592.00	\$16,616.00	\$21,963.00
OPERATING PROFIT MARGIN %	-17.1374	24.7943	34.5017	23.904

Advertising

Apply Competitive advantages to attract more customers to subscribe

Incorporation

Incorporate Schedulize into other websites

Reach the financial goal

\$21,963 in three years;
Milestone

Maintenance

Ongoing support and update

Implementation Plan

Questions?

Appendix

<http://community.mis.temple.edu/apointmentscheduler/final-deliverable/>
