

ICA #3 - Converting ERDs to schemas

Submission Instructions

Submit your solutions as a word or pdf file through **Canvas>Assignments> In-Class Activities (ICAs)**.

I suggest you use the PowerPoint template I posted for this exercise to create your schemas and paste it to a word document as a picture.

NOTE: You may have noticed that ERDPlus can also convert an ERD to a schema. But I recommend you NOT to use ERDPlus to create schema because it will not show cardinality.

In this activity, we will convert two ERDs (from ICA #2) to database schemas. Below are the rules of how to successfully convert an ERD to a schema.

1. Create a table for every entity

2. Create table fields for every entity's attributes

3. Implement relationships between the tables

1:1
relationships

- Put primary key field of one table into other table as foreign key field

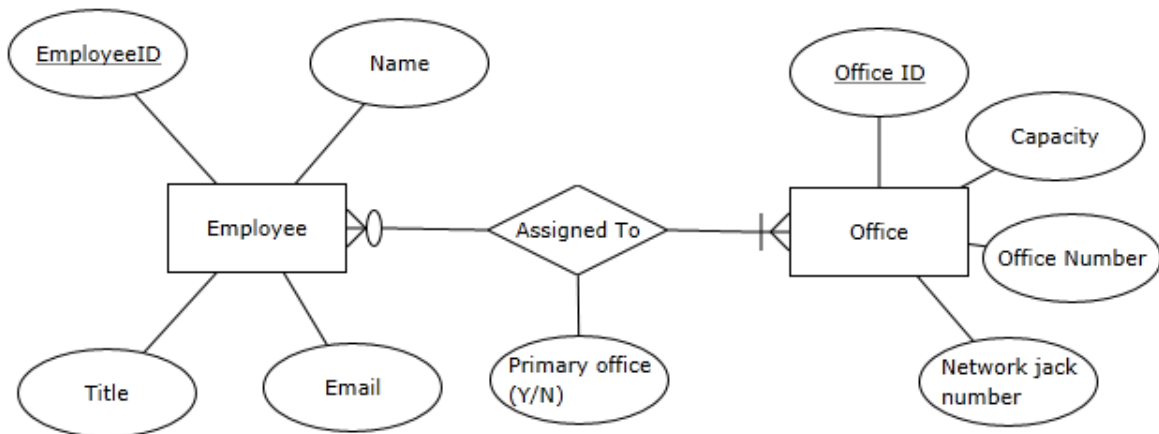
1:many
relationships

- Primary key field of "1" table put into "many" table as foreign key field

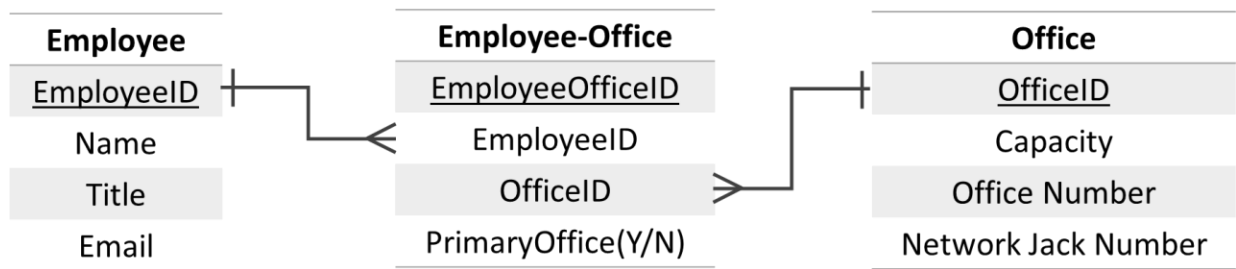
many:many
relationships

- Create new table
- 1:many relationships with original tables

So, for example, if you have this (very simple) ERD with a many-to-many relationship:



You'll wind up with this schema (note that we only specified maximum cardinality):

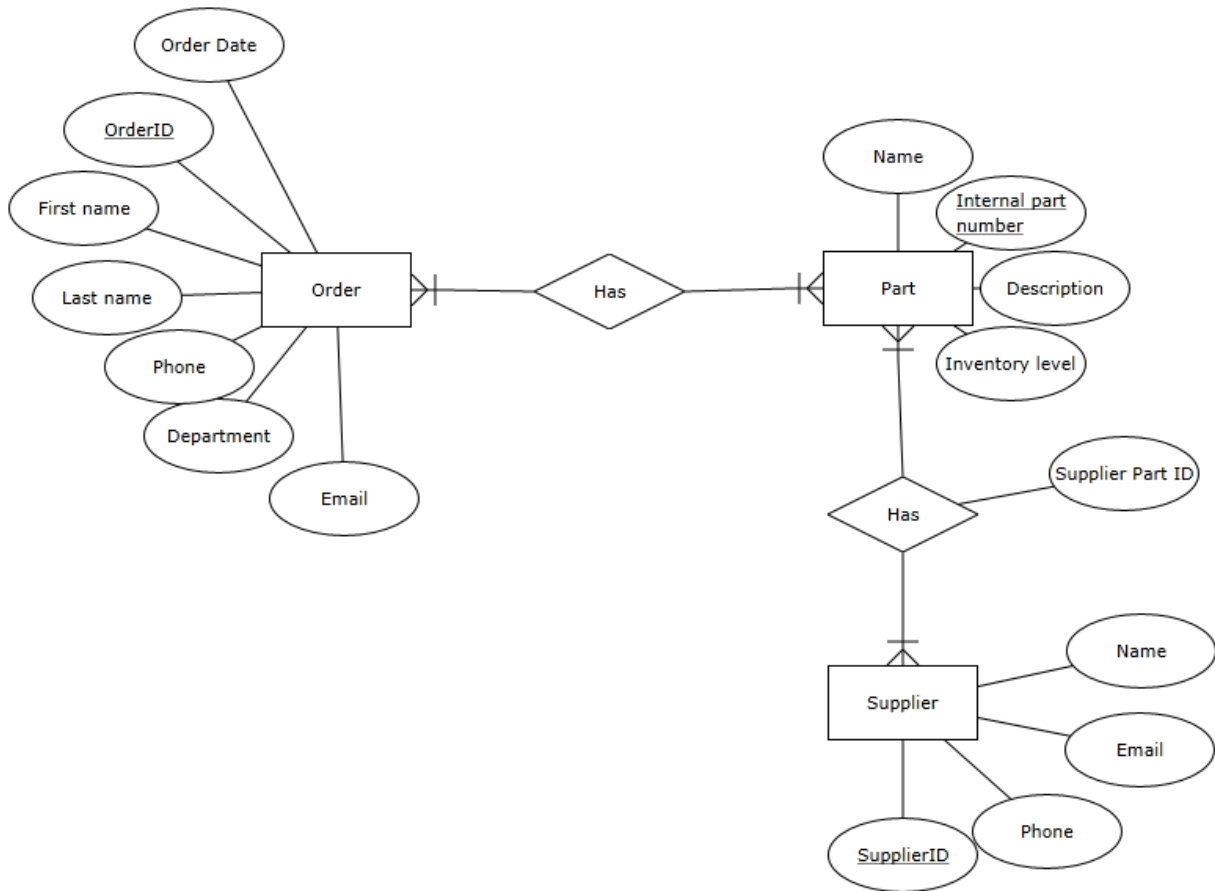


New table with

- New primary key
- Foreign keys from other tables' primary keys
- Attribute describing the relationship (if applicable)

Now create the schemas for the following ERDs (You DO NOT need to specify minimum cardinality for the ICA.):

Scenario 1: Inventory and Parts



Scenario 2: Housing Authority

