



MIS 3504

Digital Design and Innovation Studio

11: CREATING AND DOCUMENTING
YOUR DATA NEEDS

Rich Flanagan / James Moustafellos

Photo: Installation by Jenny Holzer, US Pavillion, Venice Biennale 1990

Sit with your
Review Pair

Team Pairs: 1+8 / 3+6 / 5+4 / 7+2



Team **REVIEW**

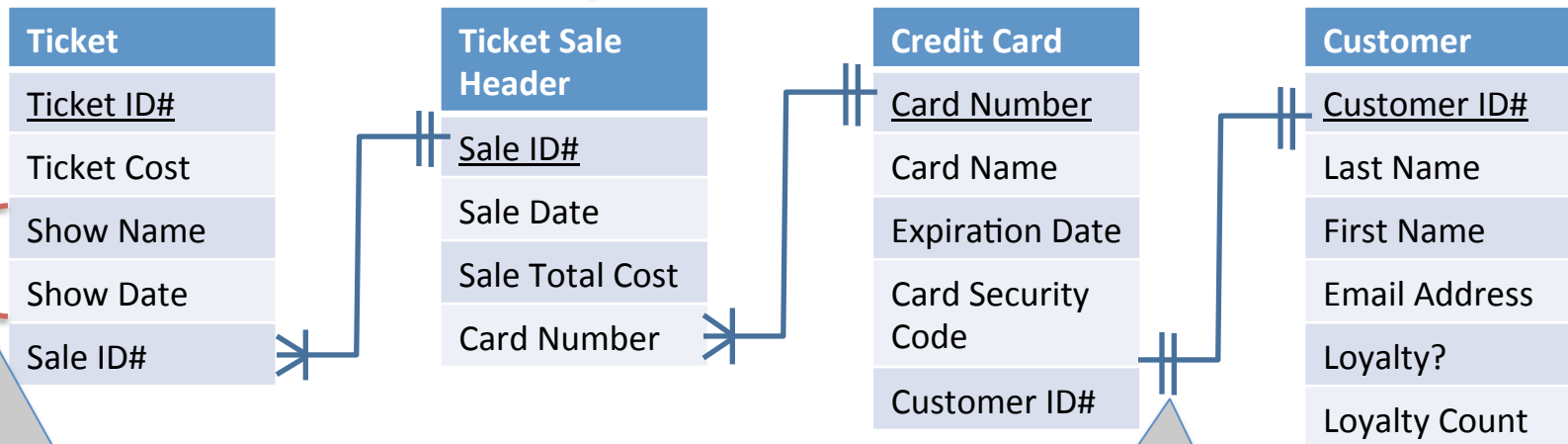
Data = ENTITIES
ATTRIBUTES
RELATIONSHIPS

Understanding **WHAT**
information the client **will**
need to do their work

Schema for Night Owl Ticket Purchases

(Tickets are purchased by customers using credit cards)

Missing Attributes



Repetitive Data = Missing Entity

Wrong Cardinality

Constructive Feedback

- Use our four evaluation criteria
- Ask open-ended questions and follow-up on the answers
- Ask why, what, when, where, who and how
- Set a positive, helpful tone
- Identify weaknesses, discuss them and then suggest improvements
- Identify strengths, discuss them, and then offer extensions

Evaluation DIMENSIONS

1 How well does it solve the client's problem?

a?

b?

c?

Your questions should generate constructive criticism and suggestions for improvement.

2 How complete is it?

a?

The number of questions for each dimension is up to each team and should represent relevant information needed.

3 How correct is it?

a?

4 How appropriate is it?

a?

This week focus your heuristic review on their scenario and prototype

Part 1:

Develop a **Heuristic Review**

Each team should work together to develop a review heuristic covering the five review dimensions to assess the other team's work.

Create a general assessment framework in outline form with questions you would ask yourself about the other team's project.

00:15min

Project Team Work Time



Part 2:

Review **PROCESS**

Teams pair up as assigned

Each scenario review is 15 minutes long

In that time, the team must present their scenario and answer the reviewing team's questions.

Reviewers must listen carefully and take detailed notes. **All team members take review notes.** Your notes should reflect your observations, critiques and assessment of what they showed you and the answers given to your questions.

USE ALL THE TIME YOU ARE GIVEN 00:15 min ea

1st team presents

Team Pairs: 2 / 4 / 6 / 8

00:15 min

2nd team presents

Team Pairs: 1 / 3 / 5 / 7

00:15 min

Part 3:

Class **Evaluation** Review

Select teams at random.

Each **team** presents their prototype. Classmates must listen carefully and take detailed notes.

Class critiques the team's prototype and offers suggestions to improve it.

Repeat with other teams.

Next Week:

Bring your **Business Rules**

Project Team Work Time

