

Installation Guide: SAP GUI 7.40 Java for Mac OSX

Notes:

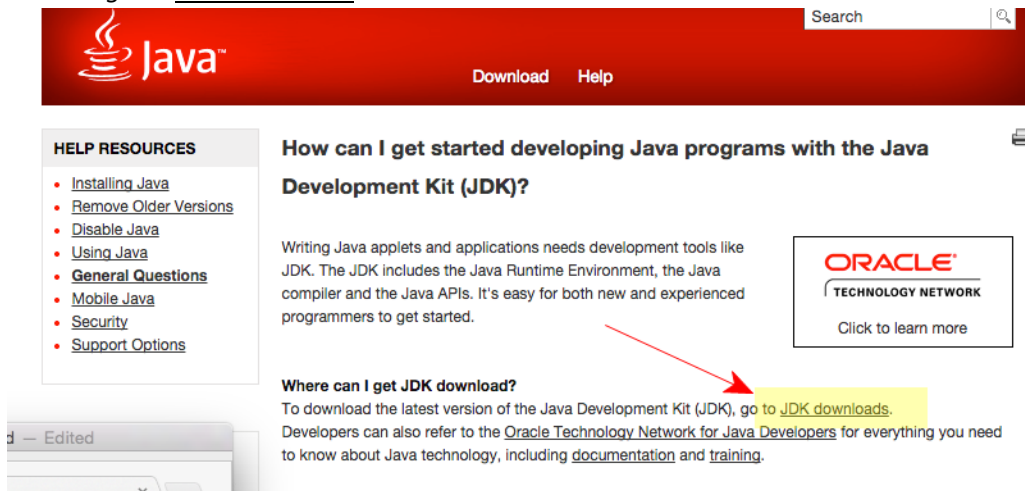
- This document was written based on the Mac OSX Mavericks (10.10.2) operating system with Java JDK 8 – Update 40 installed.
- The filenames of the Java JDK and SAP GUI may differ than those shown in the screenshots.
- The Java JDK is required. This is different than the JRE.

Install the Java JDK

- 1) Visit <http://www.java.com/jdk>



- 2) Click on go to JDK downloads.



3) Click on *DOWNLOAD* under JDK.

Java SE Downloads



Java Platform (JDK) 8u40



NetBeans with JDK 8

Java Platform, Standard Edition

Java SE 8u40
 This release includes important security fixes. Oracle strongly recommends that all Java SE 8 users upgrade to this release.
[Learn more](#)

- [Installation Instructions](#)
- [Release Notes](#)
- [Oracle License](#)
- [Java SE Products](#)
- [Third Party Licenses](#)

JDK
DOWNLOAD

Server JRE
DOWNLOAD

4) First, accept the license agreement, then download the Mac OS X file.

Java SE Development Kit 8u40

You must accept the [Oracle Binary Code License Agreement for Java SE](#) to download this software.

Accept License Agreement
 Decline License Agreement

Product / File Description	File Size	Download
Linux x86	146.85 MB	jdk-8u40-linux-i586.rpm
Linux x86	166.82 MB	jdk-8u40-linux-i586.tar.gz
Linux x64	145.14 MB	jdk-8u40-linux-x64.rpm
Linux x64	165.19 MB	jdk-8u40-linux-x64.tar.gz
Mac OS X x64	221.89 MB	jdk-8u40-macosx-x64.dmg
Solaris SPARC 64-bit (SVR4 package)	131.59 MB	jdk-8u40-solaris-sparcv9.tar.Z
Solaris SPARC 64-bit	92.83 MB	jdk-8u40-solaris-sparcv9.tar.gz
Solaris x64 (SVR4 package)	139.45 MB	jdk-8u40-solaris-x64.tar.Z
Solaris x64	95.82 MB	jdk-8u40-solaris-x64.tar.gz
Windows x86	175.71 MB	jdk-8u40-windows-i586.exe
Windows x64	180.19 MB	jdk-8u40-windows-x64.exe

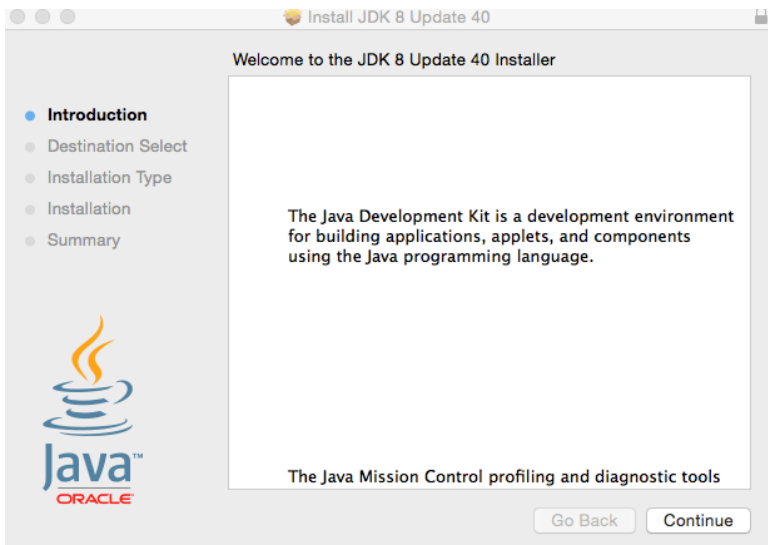
5) Double-click the *.dmg* file.



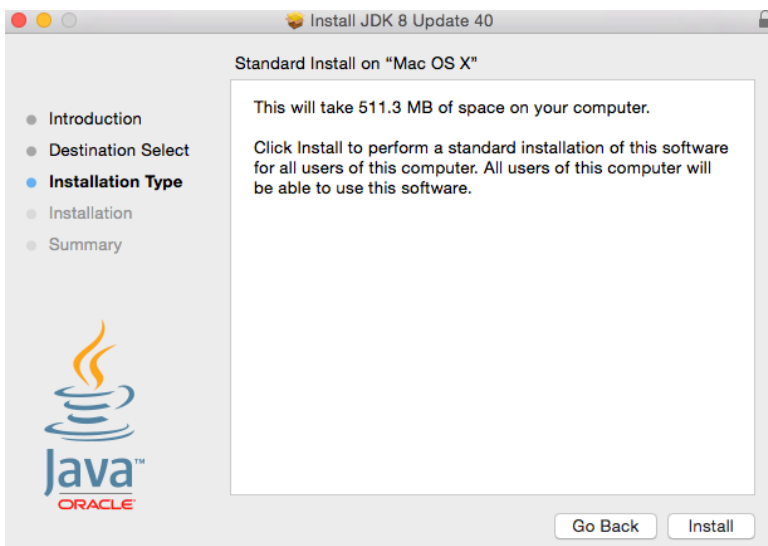
6) Double-click the box icon.



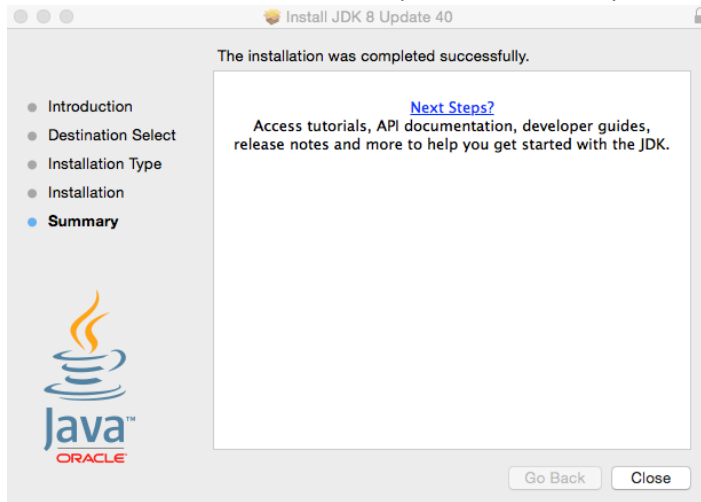
7) Click *Continue*.



8) Click *Install*.



- 9) The installation should have completed successfully. Press *Close*.



Install SAP GUI 7.40 for Mac

- 1) Download the SAP GUI installation file *PlatinGUI740_#-MacOSX.jar*. When the download has finished, double-click this file.



- 2) If the following error message occurs, proceed to the next step. If there is no error, please skip to step 6.



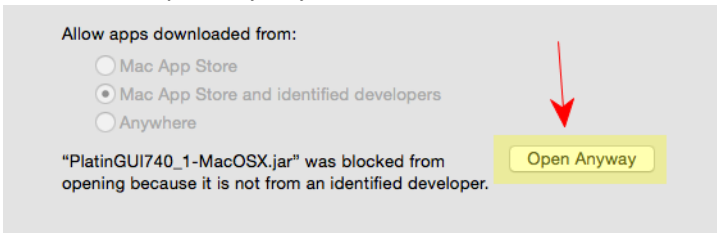
- 3) Open your Mac's system settings.



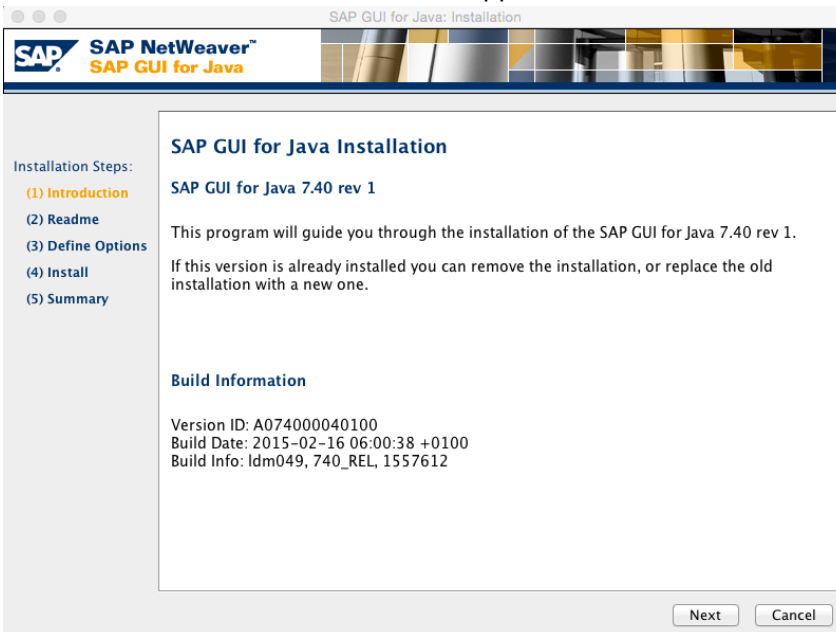
- 4) Click on *Security and Privacy*.



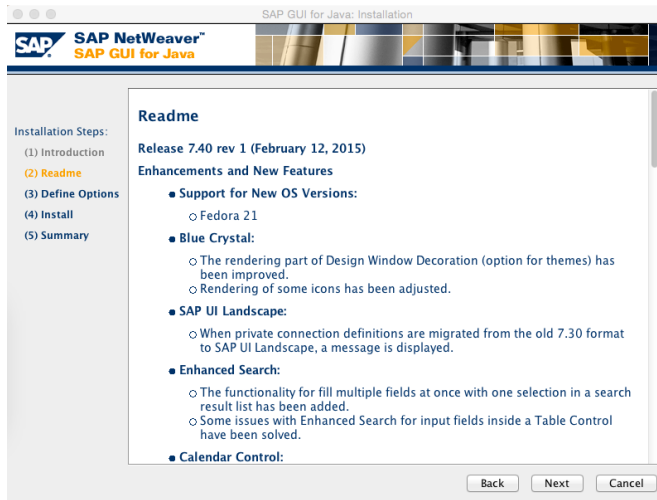
- 5) Click on the *Open Anyway* button.



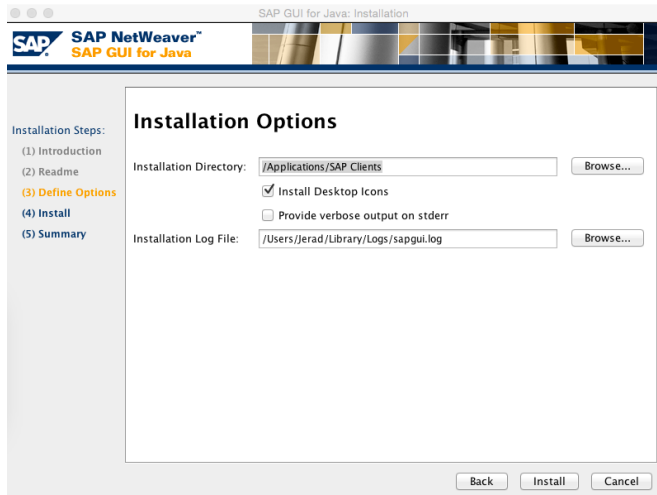
- 6) The SAP GUI installation wizard should appear. Click on *Next*.



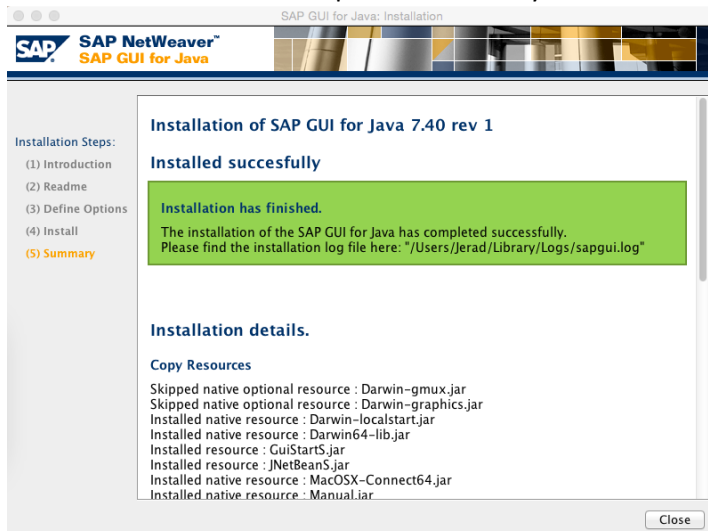
7) Click on *Next*.



8) Click on *Install*.

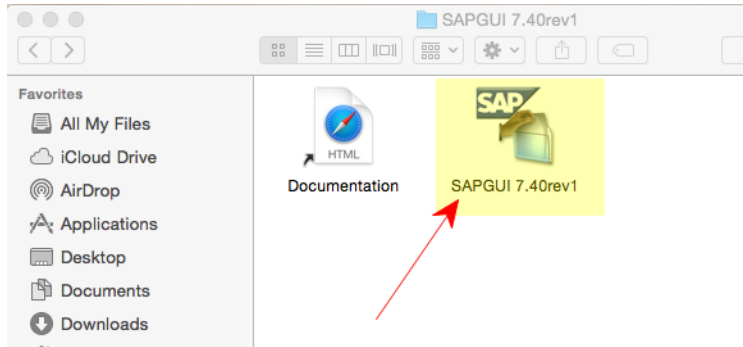


9) The installation should complete successfully. Click on *Close*.

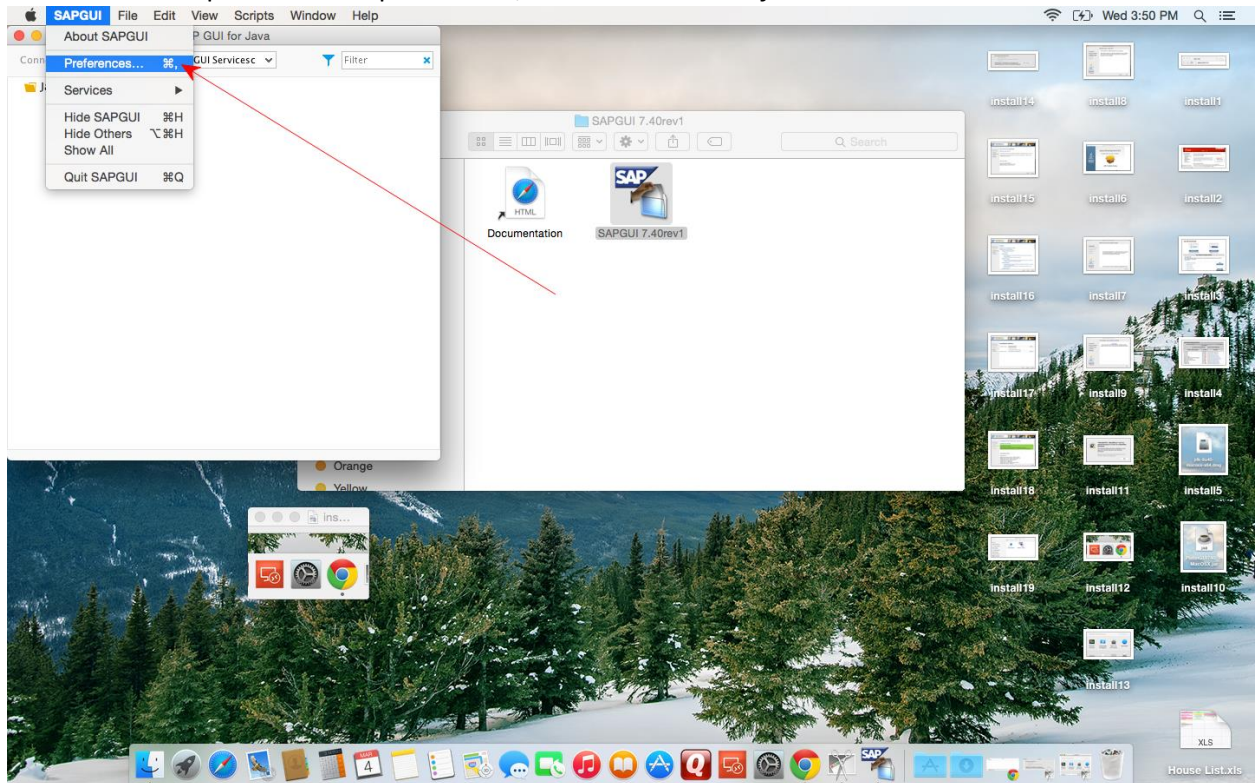


[Access and Configure SAP GUI 7.40 for Mac](#)

- 1) Open Finder and navigate to *Applications > SAP Clients > SAPGUI 7.40rev#*. Double-click on *SAPGUI 7.40rev#*.

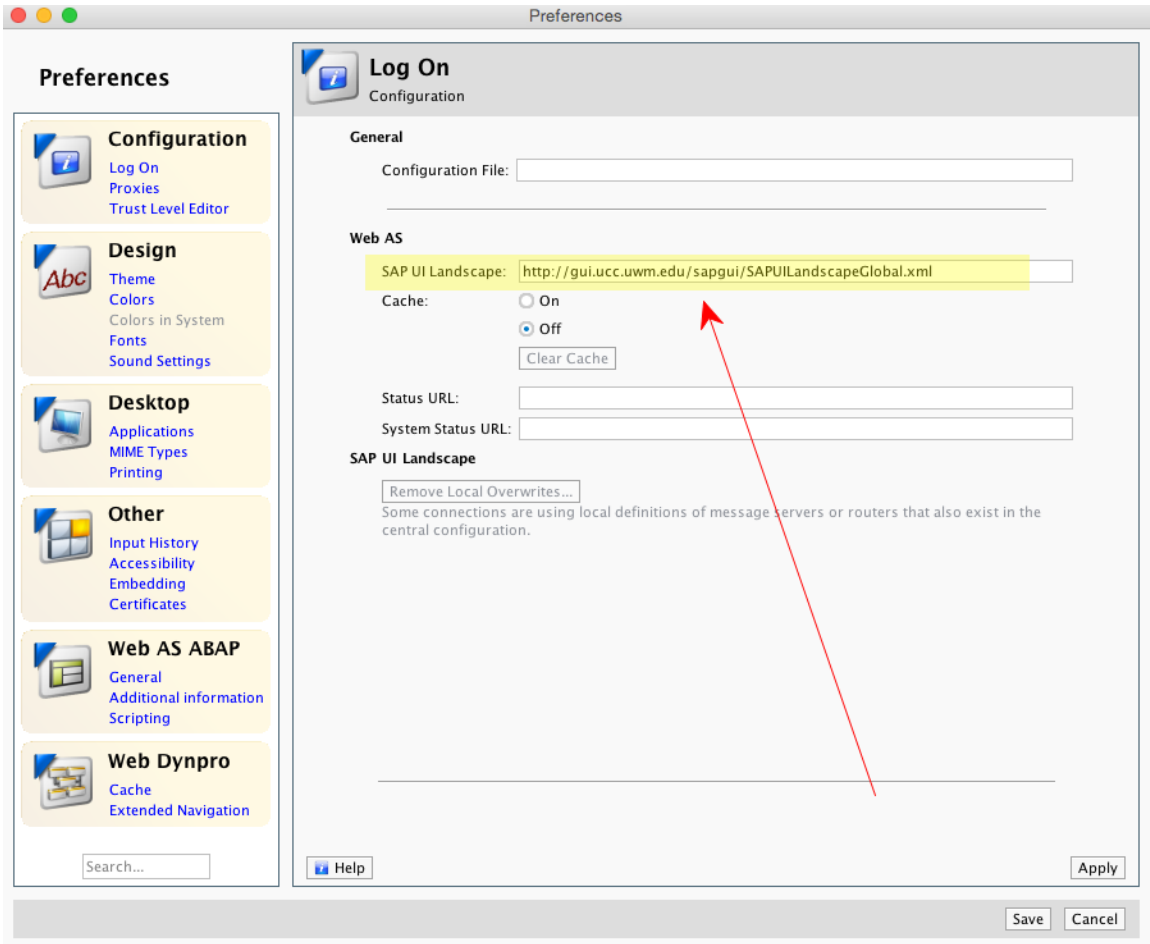


- 2) SAPGUI should open. On the top menu bar, select *SAPGUI > Preferences*.

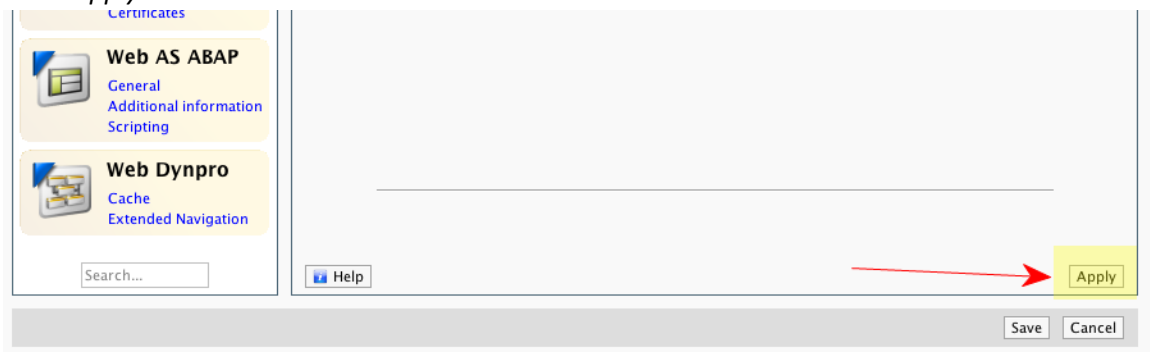


- 3) On the section titled *Log On*, you will need to type in or paste the following link in the *SAP UI Landscape* box under *Web AS*.

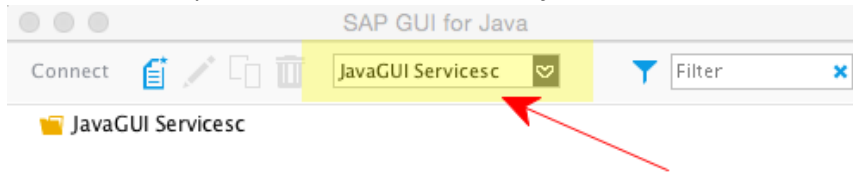
<http://gui.ucc.uwm.edu/sapgui/SAPUILandscapeGlobal.xml>



- 4) Press *Apply* and close the Preferences window.



- 5) Click on the drop-down menu below *SAPGUI for Java* and select UW-Milwaukee UCC.



- 6) The SAP server list should now be populated. Double-click on the system specified by your instructor to connect.

