

Emotional Wellbeing

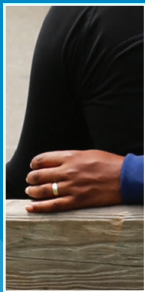
Human Impact



Emotional Wellbeing

Human Impact

How might your system have direct or indirect impact on people's emotional or mental wellbeing? How might data or system unavailability, unauthorized alterations, or confidentiality breaches cause harm?



Example Related Concepts

Example Assets: attachment to keepsakes · peace of mind · convenience

Example Outcomes: cause fear, anger, loneliness, or confusion

Financial Wellbeing

Human Impact



Financial Wellbeing

Human Impact

How might your system have direct or indirect impact on people's financial assets or worldly possessions? How might data or system unavailability, unauthorized alterations, or confidentiality breaches cause harm?



Example Related Concepts

Example Targets: electronic home-entry systems · online bank credentials

Example Attacks: theft · extortion or blackmail

Personal Data

Human Impact



Personal Data

Human Impact

What kinds of personal data does (or could) your system collect, store, or share? How might current or future compromise, corruption, or unavailability of this data cause harm?



Example Related Concepts

Example Data: medical records · embarrassing pictures · browsing history

Example Uses: perform identity theft · perform blackmail · delete financial records

Physical Wellbeing

Human Impact



Physical Wellbeing

Human Impact

How might your system have direct or indirect impact on people's physical wellbeing? How might data or system unavailability, unauthorized alterations, or confidentiality breaches cause harm?



Example Related Concepts

Example Assets: access to food and water · access to electricity · an individual's location

Example Targets: medical devices · cars · medication or allergy records

Relationships

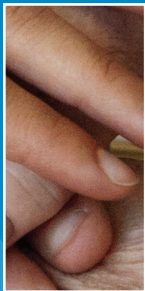
Human Impact



Relationships

Human Impact

How might your system have direct or indirect impact on relationships? How might data or system unavailability, unauthorized alterations, or confidentiality breaches cause harm?



Example Related Concepts

Example Relationships:
interpersonal · inter-
organizational · international

Example Outcomes: damage
a company's reputation ·
cause family arguments

Societal Wellbeing Human Impact

Freedom Socialist

The heroic story of working-class Detroit

Your weekly newspaper from Capitol Hill since 2001: Populist & Independent — Not Republican or Democrat

American Free Press

GLOBAL TAX LOOMS

By Mark Anderson

Volume XIII • Number 23/24
June 10 & 17, 2013
\$2.00 per copy
www.americanfreepress.net
REAL DATE: June 7, 2013

WORKERS VANGUARD

No. 10206

14 June 2013

Threatening Reporters, Spying on Public Capitalist Surveillance State: Everyone's a Target

Your weekly newspaper from Capitol Hill since 2001: Populist & Independent — Not Republican or Democrat

American Free Press

Volume XIII • Number 25
June 24, 2013
\$2.00 per copy
www.americanfreepress.net

KLEPTOCRATS CONVENE

Elite sneaks deals on world tax, U.S. of Europe, austerity, nationalism at 2013 meeting

By Mark Anderson

WASHINGTON, D.C.—A revolutionary "United Front of Europe" (UFE) conference was

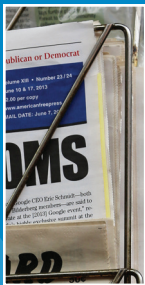
served and patrolled by Hertfordshire police for alternative press and protesters today.

Not only did Meacher corroborate this writer's story in the June 10 & 17 editions of AFP that a global tax treaty was developed at the meeting, AFP that a global

Societal Wellbeing

Human Impact

How might your system have direct or indirect impact on the financial, physical, or emotional wellbeing of a society? How might data or system unavailability, unauthorized alterations, or confidentiality breaches cause harm?



Example Related Concepts

Example Outcomes: create mass hysteria · alter public discourse · cause physical harm · affect access to resources

Example Targets: online voting systems · public infrastructure and cyber-physical systems · government record databases

The Biosphere

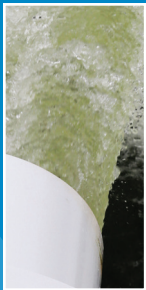
Human Impact



The Biosphere

Human Impact

How might your system have direct or indirect environmental impacts? How might data or system unavailability, unauthorized alterations, or confidentiality breaches cause harm?



Example Related Concepts

Example Outcomes: use excessive resources · pollute water sources · cause fires

Example Targets: public infrastructure and cyber-physical systems · data centers

Unusual Impacts

Human Impact



Unusual Impacts

Human Impact

What kinds of special or unique values might be impacted by your system? How might data or system unavailability, unauthorized alterations, or confidentiality breaches cause harm?

