

The background features a stylized map of the United States in shades of red and orange. Several cartoonish COVID-19 virus particles are scattered across the map. The main title is centered in a large, bold, white font.

COVID-19 Death/Infection Rate by State and Political Party

Wei Liu, Ben Ruth, Caroline Malone, Miray
Bolukbasi, Sajan Benny

TABLE OF CONTENTS

Scenario

01

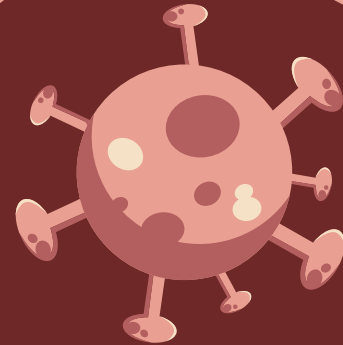
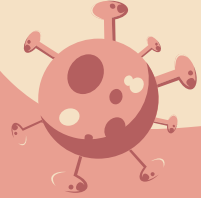
02

Data Analysis

Conclusion

03





1

SCENARIO

- Look at COVID-19 case & death rates
- Match states with political party (2020 election)
- Show if rates depend on party

DATA

- CDC website to examine metrics of pandemic
- Our independent variable: Party of the state

KEY ELEMENTS

- Total deaths & cases
- Party of State
- Election result in 2020
- Death Rate (Per 100000)
- Case Rate (Per 100000)

2

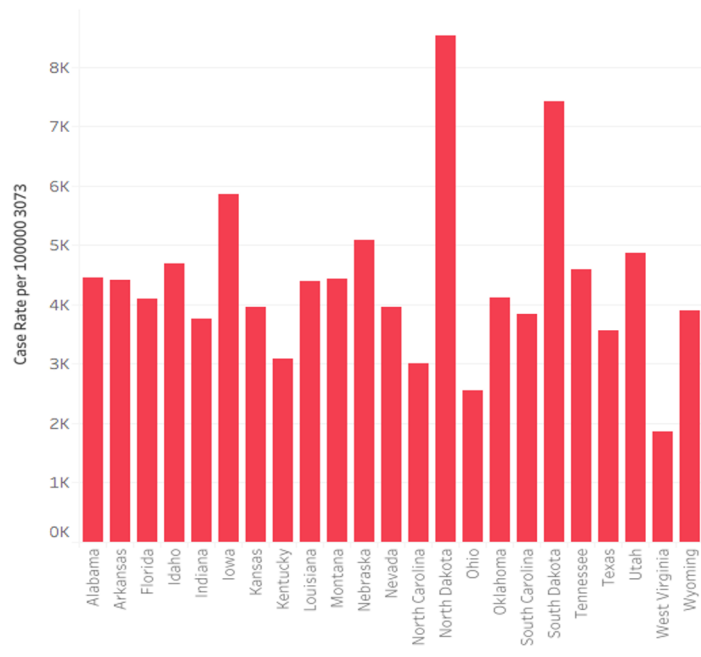
DATA ANALYSIS AND RESULTS

- Data represented current case totals & parties
- Per 100,000 cases,
 - Average higher in Republican states(4,367 cases)
 - Democratic states (2,834 cases)
- Death rates,
 - Republican states: 1.35%; Democratic states: 2.2%

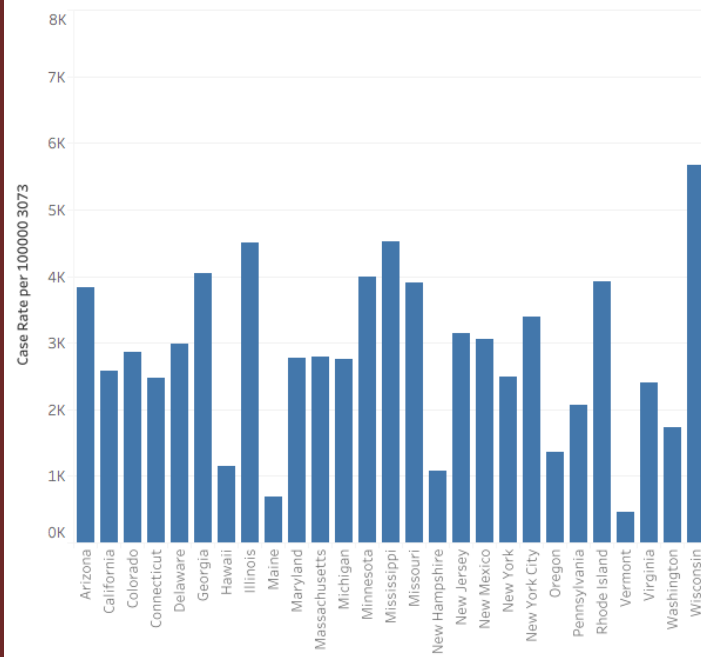


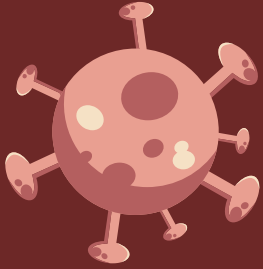
Case Rate Per 100,000 Republican vs Democratic

Republican States

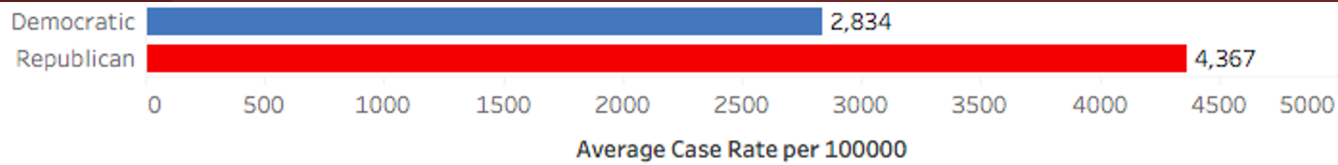


Democratic States





Average states' case rates (grouped by party)



3

CONCLUSION

01

Objective: discover COVID rate correlation to political party

02

Used CDC's website for data
Cross referenced data with party

03

Findings

- Higher death rate (per 100,000 people) for democratic states (.85% difference)
- Ride in cases higher for republican states (per 100,000 people) (1,533 difference)
- Democratic states have a greater population density, a higher percentage of Hispanic residents, a larger percentage of urban areas and a greater median income.
- Republican states have a lower median age, a smaller percentage of residents with a bachelor's degree, a higher rate of uninsured residents, and a higher percentage of people living in poverty.

REFERENCES

2020 Election Results - Google and The Associated Press

<https://www.google.com/search?q=election+2020+results&oq=election&aqs=chrome.2.69i57j35i39l2j0i67i395j0i67i395i433j0i131i395i433l2j0i395i433j0i67i395j0i20i263i395.11928j1j4&sourceid=chrome&ie=UTF-8>

COVID-19 Data Set - Center For Disease Control and Protection <https://data.cdc.gov/Case-Surveillance/United-States-COVID-19-Cases-and-Deaths-by-State-o/9mfq-cb36>

How do COVID-19 cases compare among Democrat- or Republican-led states? Study finds out <https://www.newsobserver.com/news/coronavirus/article246615318.html>

The background features a dark red gradient with large, organic, wavy shapes in lighter red and orange tones. Several stylized virus particles are scattered across the scene. Each virus particle is a sphere with a central dark spot and several protruding spikes of varying lengths. One large virus particle is prominent in the lower-left quadrant, another is in the upper-right, and a smaller one is in the lower-left. The word "THANKS" is centered in a large, white, sans-serif font.

THANKS

Content by Wei, Ben, Sajan
Data visuals: Caroline
Design: Miray