



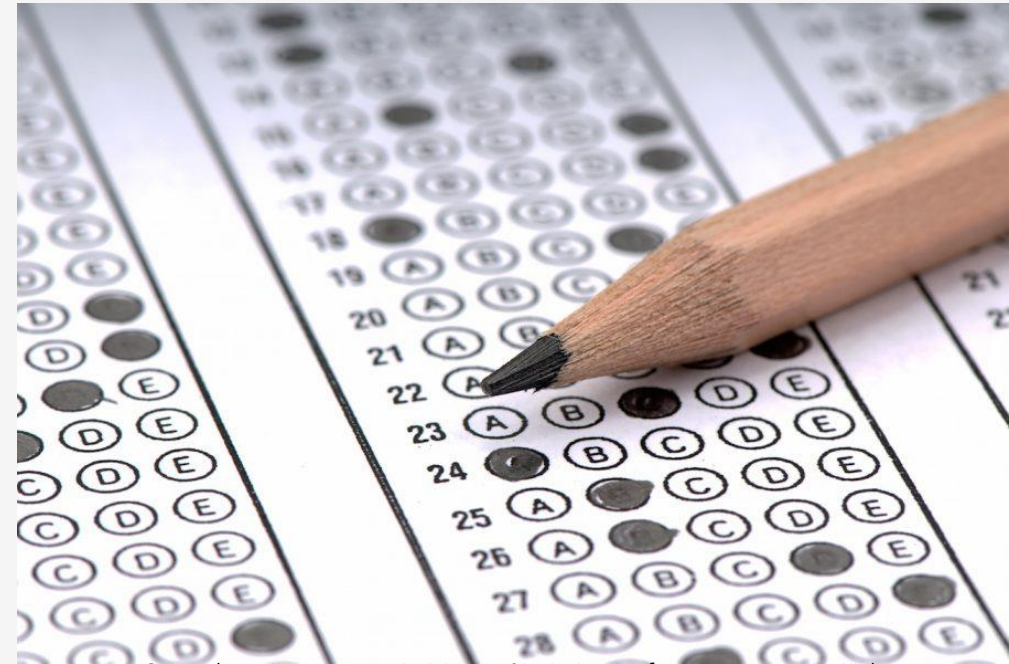
MIS 2101

Exam 1 Review

Exam Will Cover Discussions: week 1 through 4

- **Readings, Videos and Lectures (60%)**
 - Information Systems
 - Systems Analysis/Systems Architecture
 - Swim Lane
 - ERD
 - DPM
 - Digital Identity
- **Mini-Case – Demonstrate your ability to apply (40%)**
 - Swim Lane Diagram
 - ERD

Note: The same narrative/Swim Lane and ERD is used for **ALL questions from 16-25**



Source: <https://ccesnews.org/opinion/2018/04/23/10-tips-for-exam-preparation/#photo>

Advice

How to prepare...



Review the slide
decks



Review the assigned
readings/videos



Review your notes

Introduction & Systems Analysis

- **Topics and Required Reading**
 - [What is an Information System?](#)
 - [Systems Architecture](#)
 - [Systems Analysis](#)
 - [What is Software Development Lifecycle \(SDLC\)](#)
- **Review**
 - Weekly PowerPoint slides

Collection of Systems

Systems = People + Process + Technology

- Manipulation of information = value
- Managed by MIS professionals
- Systems surround us 24/7
- Application Program Interface (API's)



- “Information System – an integrated set of components for collecting, storing, and processing data and for providing information, knowledge and digital products.”

Collection of Technologies

Including:

- Hardware
- Software
- Policies
- Education Tools
- API's

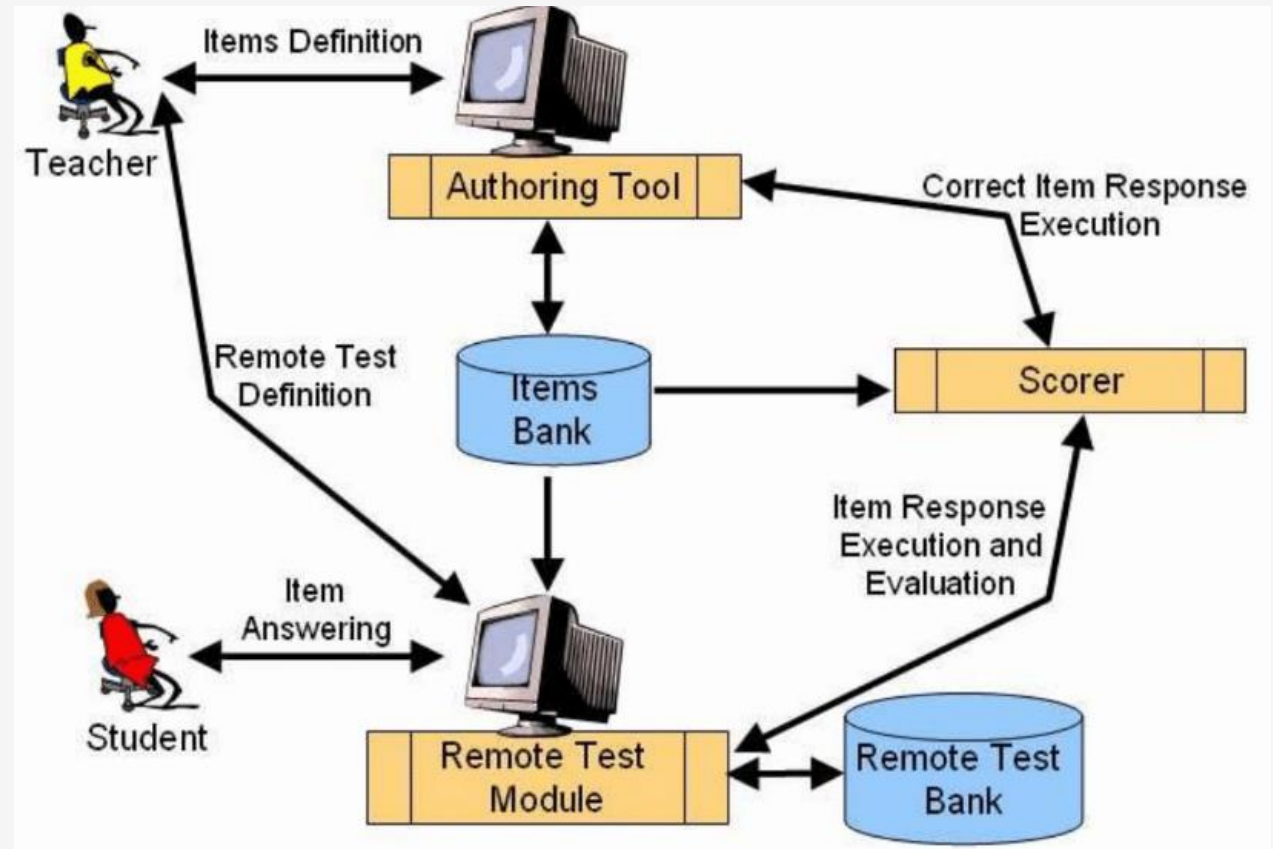


Systems Analysis

What is “Systems analysis?”: Problem solving technique that “decomposes” a system into its component pieces for the purpose of studying how well these parts work & interact to accomplish their purpose

Systems Architecture

- We use “decomposition” to analyze the components of the system
- Conceptual Diagram
- Structural Components
- Identify/Solve Problems
- Existing or New
- Communication Tool



Software Development Cycle (SDLC) Methodologies (Model)

- Waterfall
- Agile / Iterative
- Lean
- Scrum / Iterative
- DevOps



Introduction to Process Mapping

- **Topics and Required Reading**
[What is a product manager? A complex, cross-functional role in IT](#)
[An Introduction to Swim Lane Diagrams](#)
- **Review**
Weekly PowerPoint slides

Process Mapping

What

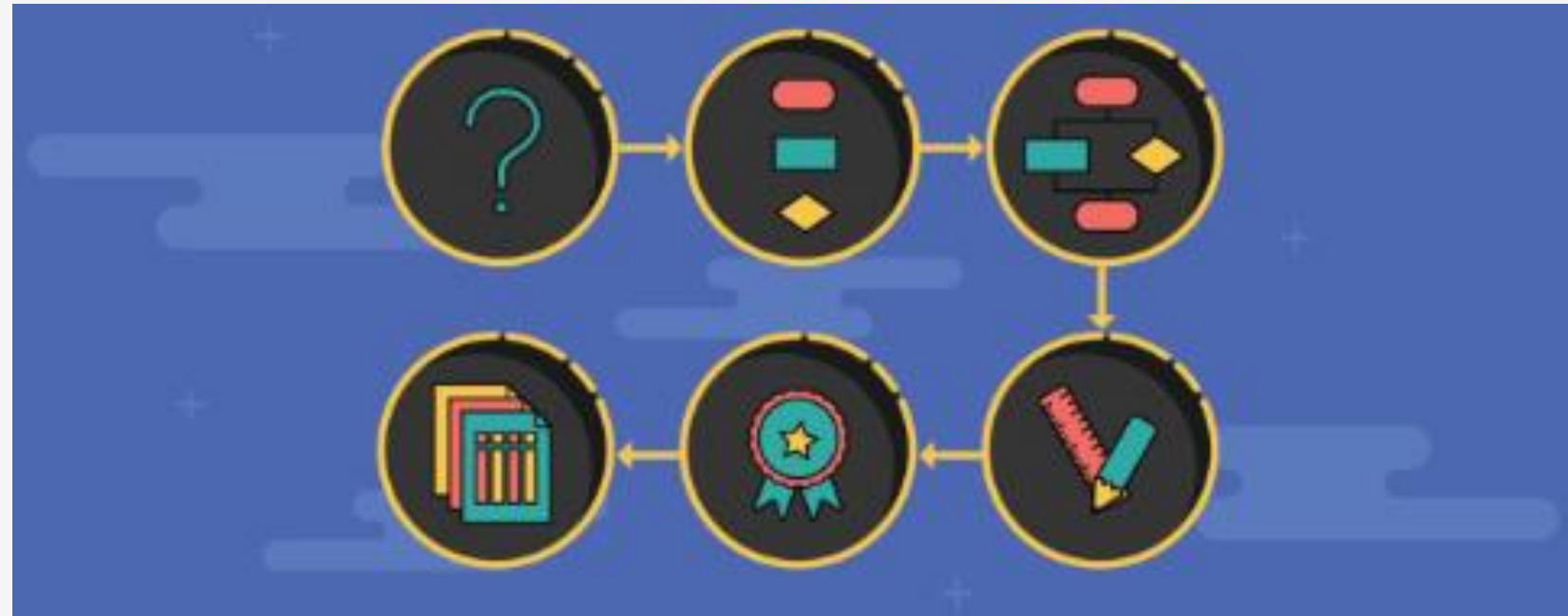
- Visual Representation

Why

- Identify Problems

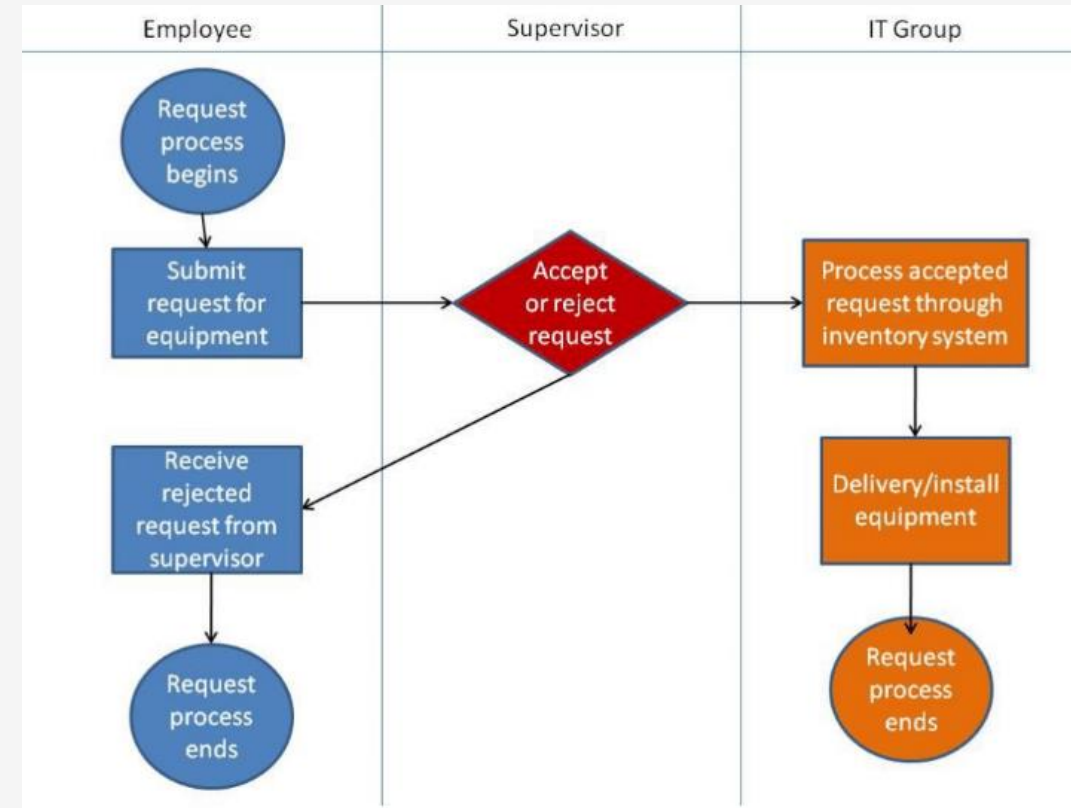
How

- Draw the "as-is"

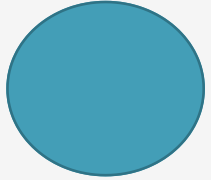


Swim Lane Diagrams

- Identifies who does what & in what order
 - Logical & Chronological
 - Indicates hand-offs
- Advantages:
 - Helps see opportunity for improvements
 - Helps eliminating duplications
 - Basis for developing new solutions
 - Useful Training tool



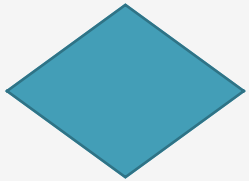
Swim Lane Diagrams - Symbols



- Circle : signifies the starting and ending of an event in the process



- Rectangle : represents an activity in the process



- Diamond : represents a decision that must be made



- Arrow : indicates the flow of the process



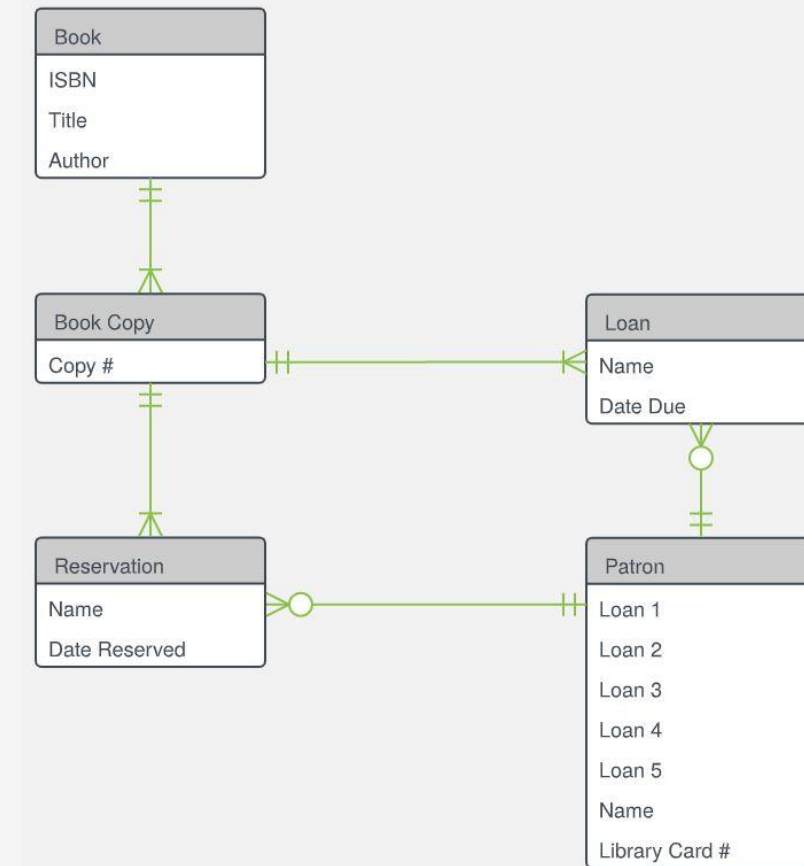
- Cylinder : represents stored data

Entity Relationship Diagram (ERD)

- **Topics and Required Reading**
 - [What is an Entity Relationship Diagram?](#)
 - [Entity Relationship Diagram](#)
 - [What is Entity Relationship Diagram \(ERD\)?](#)
- **Review**
 - Weekly PowerPoint slides

What is an Entity Relationship Diagram?

An Entity Relationship Diagram (ERD) is a visual representation of different data using conventions that describe how these data are related to each other.

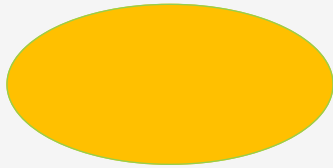


Source: <https://dzslcw3kip6qmk.cloudfront.net/marketing/pages/chart/examples/library-erdiagram.svg>

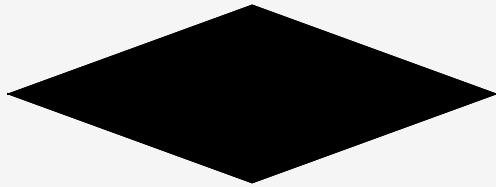
Primary ERD Symbols: *Chen's Database Notation*



- Entity = noun
ex: shopper, item

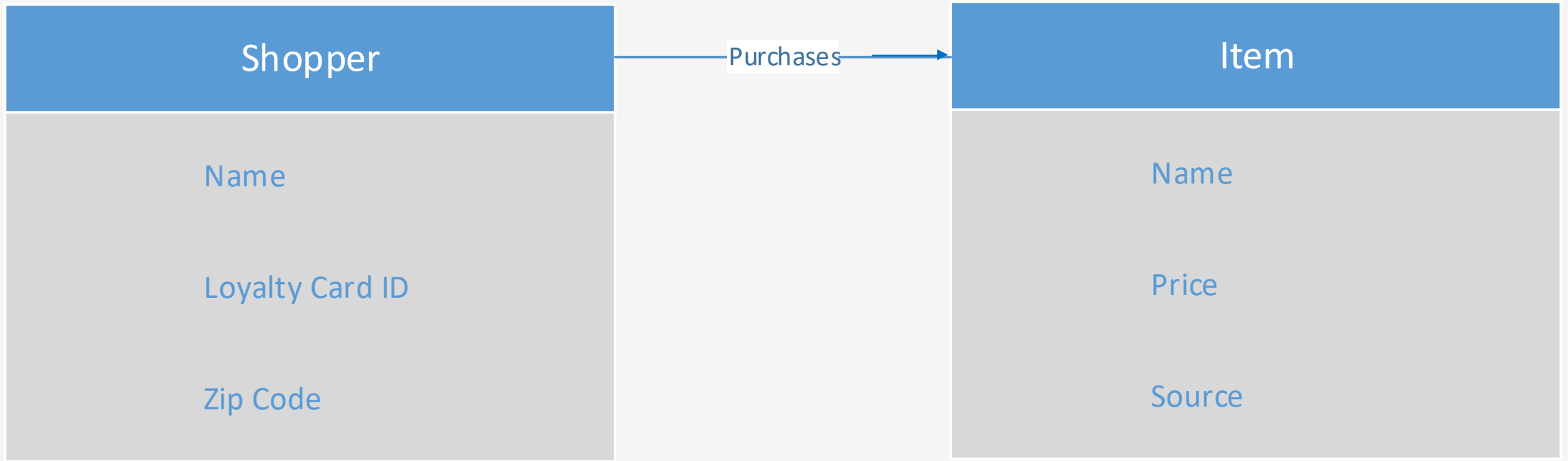


- Attribute = adjective/characteristic
ex: item price



- Relationship = verb
ex: buys

Entity Relationship Diagram: *ERD tables*

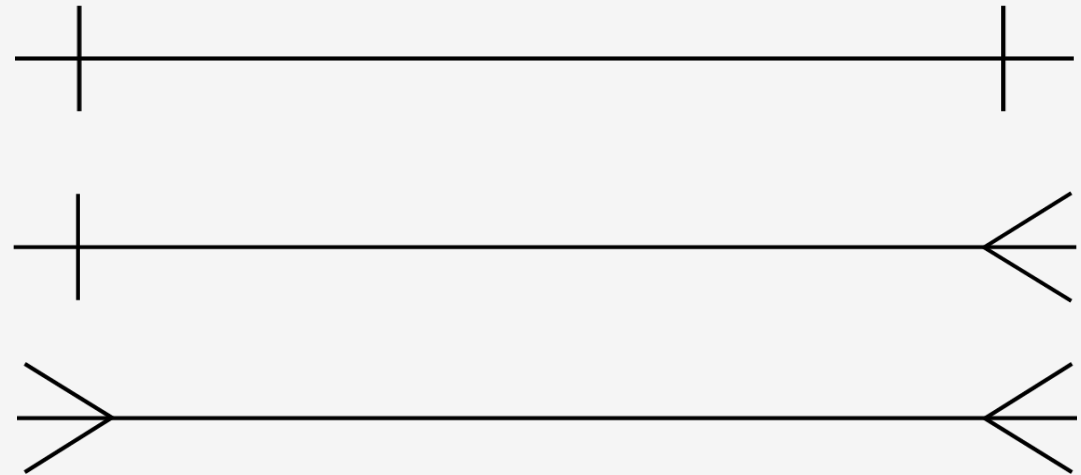


Crow's Foot Database Notation

Cardinality in Data Modeling: *Relationships*

Cardinality describes a fundamental characteristic of the relationship between two entities.

- 1:1 = a one to one relationship
- 1:m = a one to many relationship
- m:m = a many to many relationship



Digital Product Management

- **Topics and Required Reading/Video**
[How AI is deciding who gets hired](#)
[What hiring managers look for in your social media profile](#)
- **Review**
Weekly PowerPoint slides

Why Salesforce?

A great platform to deliver cloud-based systems products

- Enables & Enhances Business
- Used by Industry Fortune 100's
 - Across all business function areas

Enabling Organizations

- Technology enables organizations to work faster/smarter/more efficient
 - See how it works
 - Understand how it used by industry
-



Remember!!

How to prepare...



Review the slide
decks



Review the assigned
readings/videos



Review your notes

On Tuesday, bring:

- 1. TUID card**
- 2. #2 Pencil**
- 3. 2 Highlighters**