

Installing to Bitvise SSH

Instructions for Windows

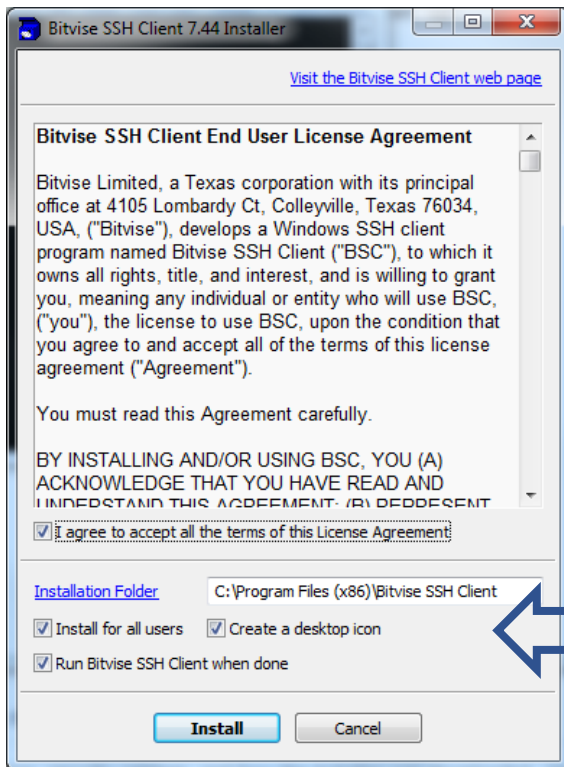
Bitvise is a free secure shell client that can be used to connect a Windows PC to a remote server, usually a Linux system. When you make a successful connection two windows will open. One window is a terminal interface. It allows you to type commands that manipulate the remote system.

The other window is a file transfer interface. This interface allows you to copy files and folders from one system to the other. You will need to use the file transfer interface regularly in this class.

In this document, you will download and install the Bitvise client and then use it to connect to the class server.

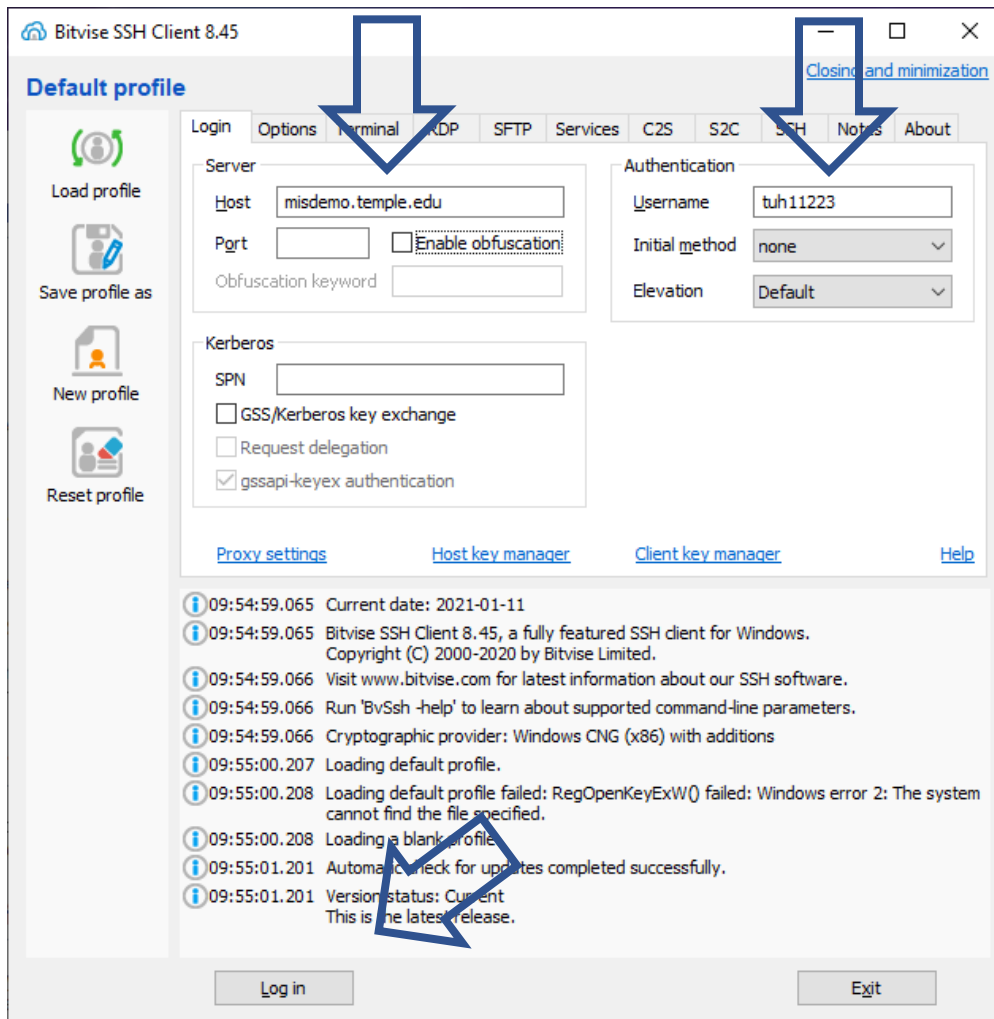
Installation

1. Visit <https://www.bitvise.com> and click on the **Download tab**.
2. Notice that there are two download links. You want that one that will allow you to “connect from my computer to an SSH server that’s already set up”. Click on the **Download Bitvise SSH Client** link.
3. Download the Bitvise SSH Client Installer exe and run it.
4. Check the “agree to terms” checkbox and click **Install**.

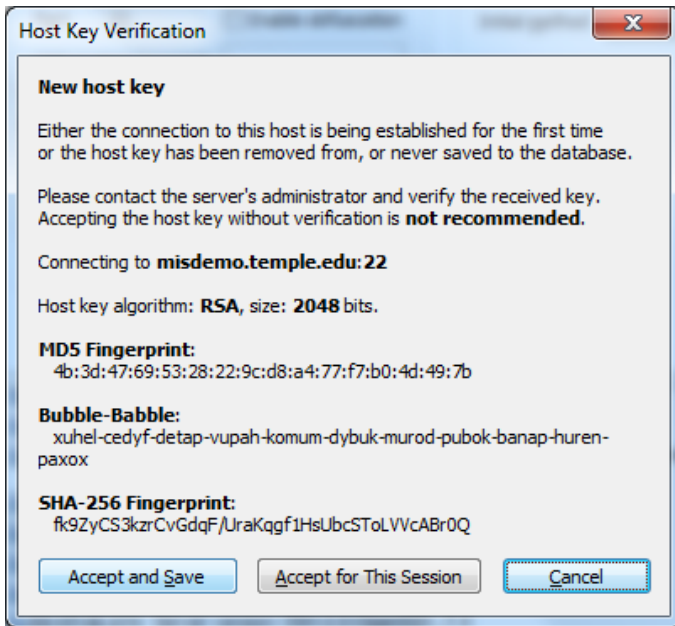


Notice also that, by default, “Create a desktop icon” is checked. This is recommended. Students will want to quickly and easily find Bitvise in this way.

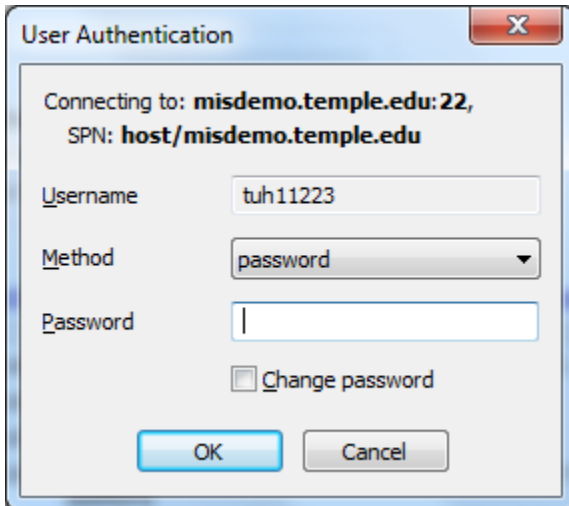
- Take all defaults in the installation. When the installation is complete, the following window will appear. This window is prompting you for the information you will need to connect to the remote system.
 - Enter in the host name of the class server: `misdemo.temple.edu`
 - Enter in your Accessnet Username.
 - Click Login



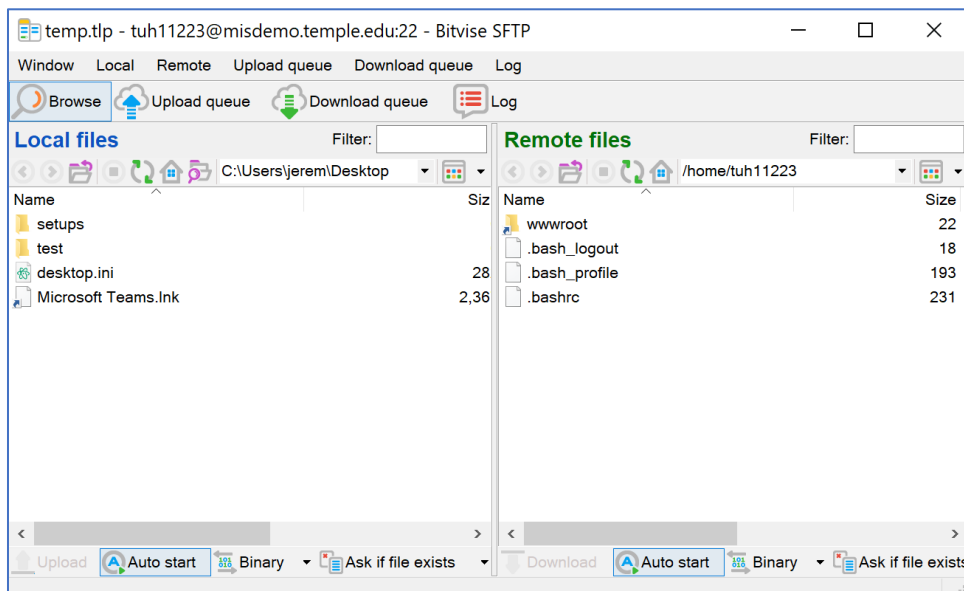
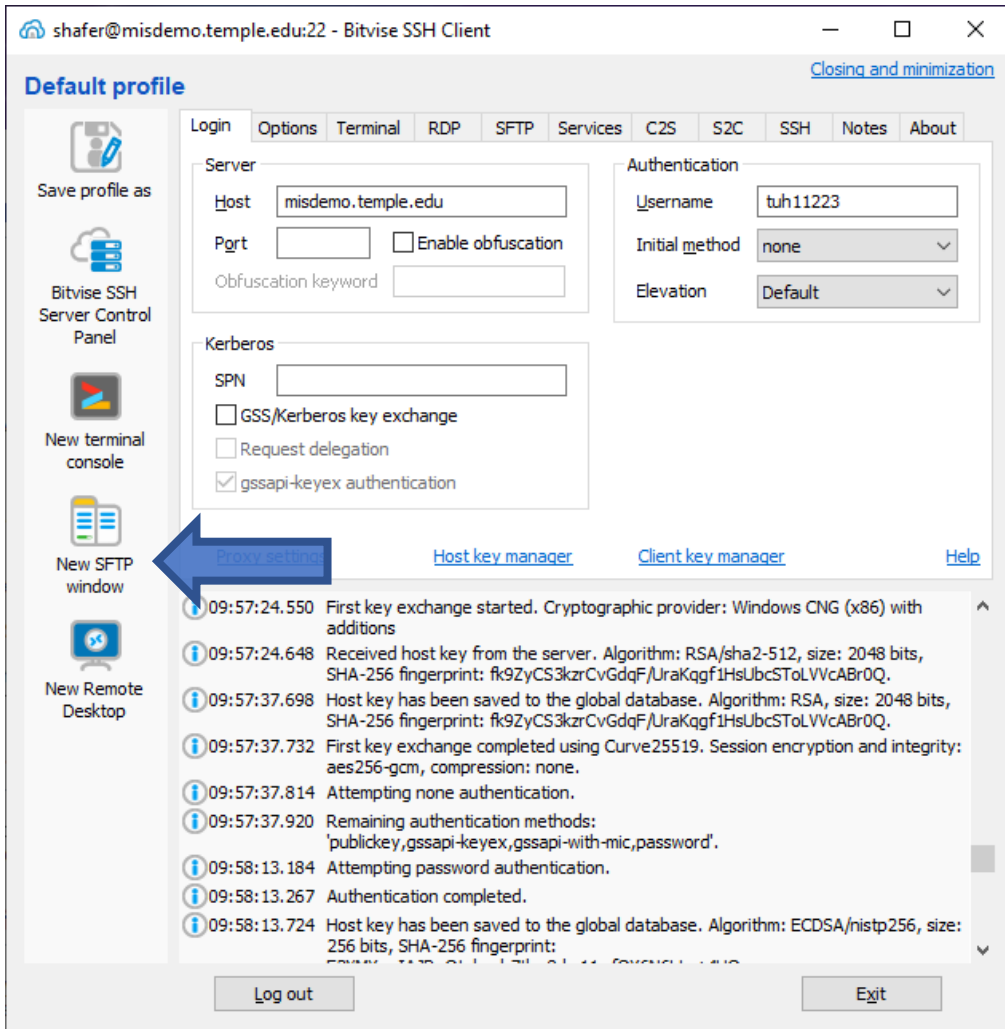
- The first time you connect to a remote server, you may see a prompt like the one below. This prompt is asking you to trust the remote system. Click **Accept and Save** to continue.



7. Next you will be prompted for your password. This password is assigned to you by your instructor and **can be found on the MIS Community Gradebook**. Type it in and click **OK**.



8. When you connect successfully, the icons on the left panel will change. Click on the “New SFTP window” icon. This will open a window with two panels. This new window has “Local Files” on the left, and “Remote Files” on the right. It is the file transfer interface.



That's it. The Bitvise client has been successfully installed. You can now close the two windows now by clicking on the X in the upper right corner of each.

9. Be sure to note the location of the Bitvise icon on your desktop.



You will need it later.

IMPORTANT NOTE: When you eventually do have work to upload, you will want to double click the **wwwroot** folder on the right panel. Then find your work on the left (local) panel. Click and drag the folder holding your local work from the left panel and drop it in the right panel. You don't have any work to post just yet! So, for now, just make note of the process.