

Assignment #2: SQL Part 1 – Basic Queries

Submission Instructions

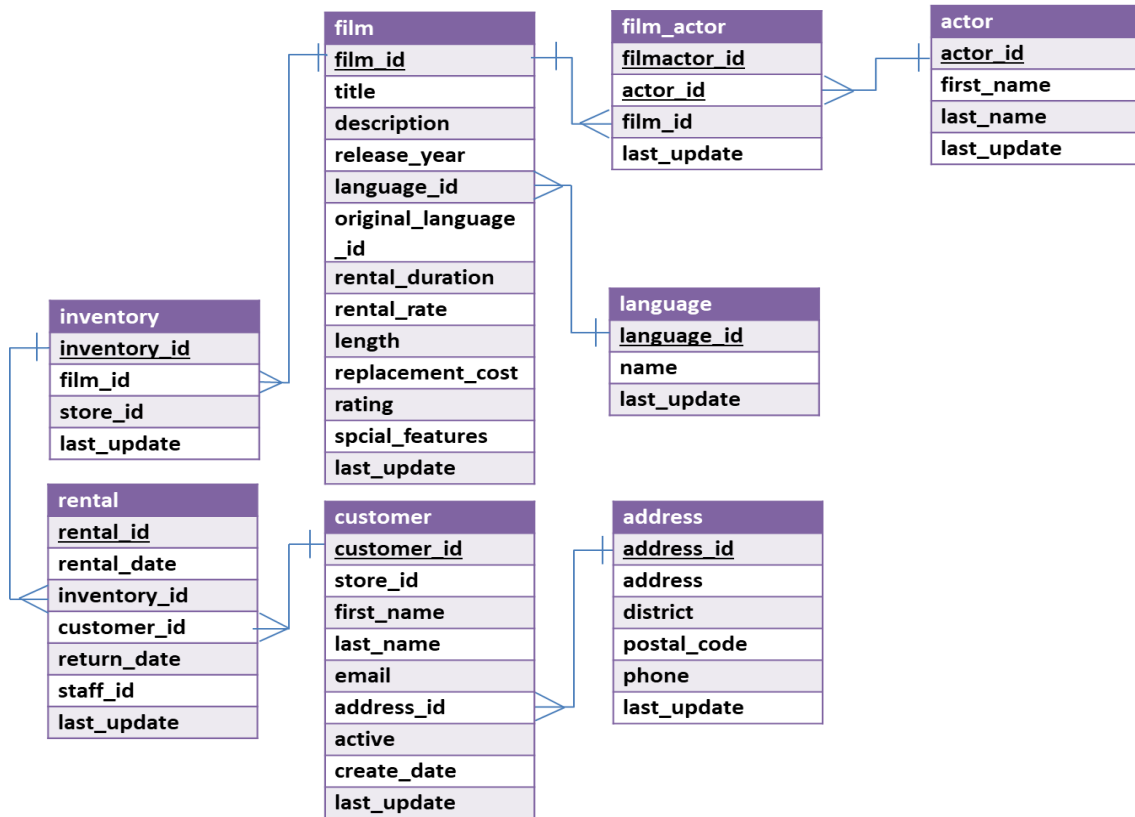
- Submit your solutions using this Google form:
<https://forms.gle/5BKpS6B1fESxBL2H9>
- You must sign in using your @temple.edu email address.
- Other sign-ins will not be accepted.
- As we did in the ICA, copy and paste the **SQL query** and the **OUTPUT** from SQL Workbench.
- If you do not follow the instructions, your assignment will be counted late.
- See the syllabus for the Late Assignment Policy

Evaluation

Your submission will be graded using these factors:

- Provide a correctly formed **SQL query** that answers the specific question asked (no extra rows or columns).
- Provide the **correct OUTPUT** to the question (the results returned from MySQL Workbench).
- Discrepant answers (that is, the SQL query and the OUTPUT do not match) will lose full credit on the problem.
- Students who multiple discrepant answers will receive a grade of zero on this assignment.

For this assignment, you will be working with the same movie rental database as the ICA #3. The schema is also the same, it is shown on the next page.



In MySQL Workbench, open the connection to the dataanalytics.temple.edu server using your username and password. Click on the “moviedb” schema and then the tables tab to see the list of tables. Recall the connection configuration as follows:

Connection Name: mis2502
 Hostname: dataanalytics.temple.edu
 Username: Your username is available on the MIS Community gradebook

Questions are provided in the Google form:

<https://forms.gle/5BKpS6B1fESxBL2H9>