

## Assignment #3: SQL Part 2 – Advanced Queries

### Submission Instructions

Submit your solutions using this Google form:

<https://forms.gle/cRJNjNjRnJg3aknq8>

- You must sign in using your @temple.edu email address.
- Other sign-ins will not be accepted.
- As we did in the ICA, copy and paste the **SQL query** and the **OUTPUT** from SQL Workbench.
- If you do not follow the instructions, your assignment will be counted late.
- See the syllabus for the Late Assignment Policy

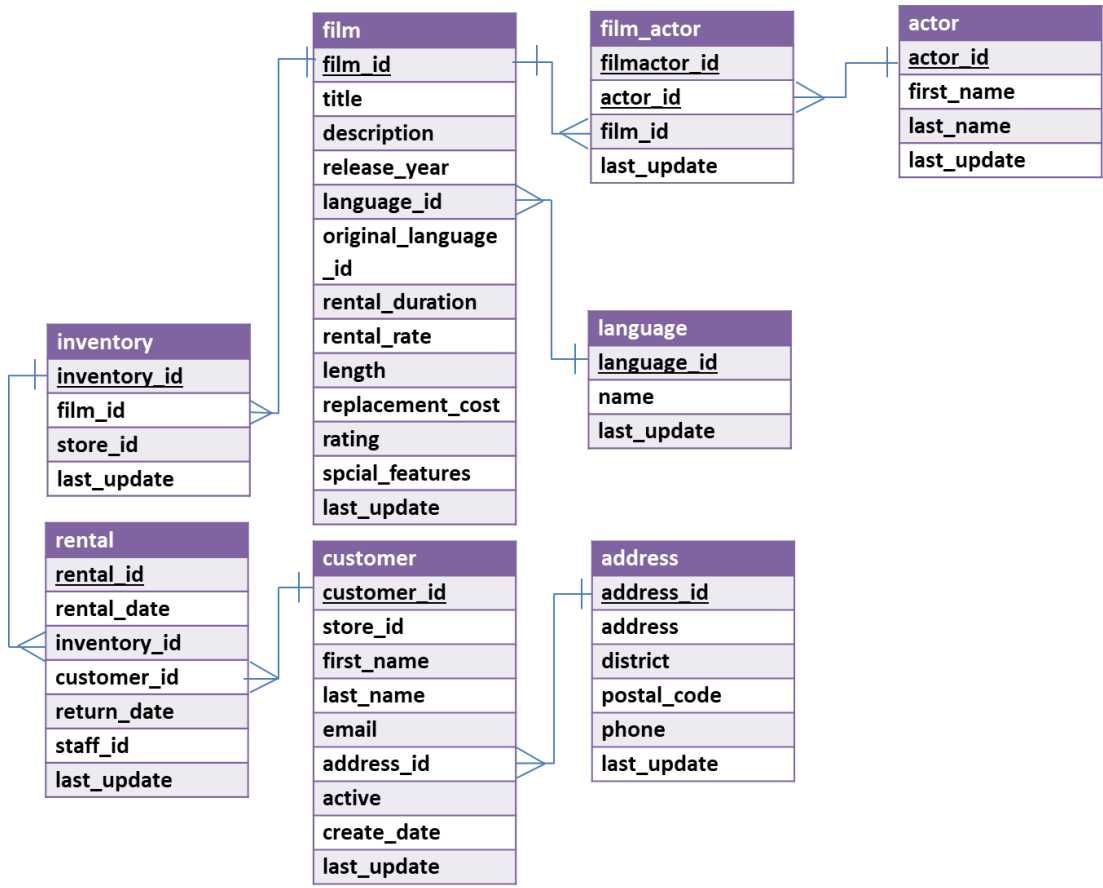
### Evaluation

Your submission will be graded using these factors:

- Provide a correctly formed **SQL query** that answers the specific question asked (no extra rows or columns).
- Provide the **correct OUTPUT** to the question (the results returned from MySQL Workbench).
- Discrepant answers (that is, the SQL query and the OUTPUT do not match) will lose full credit on the problem.
- Students who multiple discrepant answers will receive a grade of zero on this assignment.

For this assignment, you will be working with the same movie rental database as ICA #4. The schema is also the same, so you can use the one provided for ICA #4 as a guide.

**CONTINUED**



Questions are provided in the Google form:

<https://forms.gle/cRJNjNjRnJg3aknq8>