

# DATA REQUIREMENTS

ITACS 5203, Unit 6

1

---

---

---

---

---

---

---

---

**Introduction**

- Data Requirements
- E-R Model
  - Conceptual
  - E-R Syntax
  - Types
  - Business Rules
- Packaged Models
- Class Model
- Domain Model
- Relationships
- Security Requirements

## LEARNING OBJECTIVES

Describe options for designing and conducting interviews and develop a plan for conducting an interview to determine system requirements.

Explain the advantages and pitfalls of observing workers and analyzing business documents to determine system requirements.

Explain how computing can provide support for requirements determination.

Participate in and help plan a Joint Application Design session.

Use prototyping during requirements determination.

Describe contemporary approaches to requirements determination.

Understand how requirements determination techniques apply to the development of electronic commerce applications.

2

---

---

---

---

---

---

---

---

**Introduction**

- Data Requirements
- E-R Model
  - Conceptual
  - E-R Syntax
  - Types
  - Business Rules
- Packaged Models
- Class Model
- Domain Model
- Relationships
- Security Requirements

## TOPICS

- 8. Structured System Data Requirements
  - 8.1. Conceptual Data Modeling
    - 8.1.1. E-R Diagramming
    - 8.1.2. Super/Sub Types
    - 8.1.3. Business Rules
    - 8.1.4. Databases
- 3.1. System Development Methodologies SDLC Phases
  - 3.1.1.1. Acquisition
    - 3.1.1.1.1. Design
      - 3.3.3.3.2.3. Entity Relationship Diagrams
- 1.9. SDLS and SSD
  - 1.9.1. Incident Response Plan
  - 1.9.2. Final Security Review
  - 1.9.3. Incorporating OWASP and MS SDLC

3

---

---

---

---

---

---

---

---

**Introduction**  
 Data Requirements  
 E-R Model  
 Conceptual  
 E-R Syntax  
 Types  
 Business Rules  
 Packaged Models  
 Class Model  
 Domain Model  
 Relationships  
 Security Requirements

## TOPICS

**Main goal:** to discover the key data contained in the problem domain and to build a structural model of the objects

4

---

---

---

---

---

---

---

---

**Introduction**  
**Data Requirements**  
 E-R Model  
 Conceptual  
 E-R Syntax  
 Types  
 Business Rules  
 Packaged Models  
 Class Model  
 Domain Model  
 Relationships  
 Security Requirements

## GATHERING INFORMATION FOR CONCEPTUAL DATA MODELS

**Two perspectives on data modeling:**

- *Top-down approach* for a data model is derived from an intimate understanding of the business.
- *Bottom-up approach* for a data model is derived by reviewing specifications and business documents.

5

---

---

---

---

---

---

---

---

**Introduction**  
**Data Requirements**  
 E-R Model  
 Conceptual  
 E-R Syntax  
 Types  
 Business Rules  
 Packaged Models  
 Class Model  
 Domain Model  
 Relationships  
 Security Requirements

## THE PROBLEM DOMAIN

Problem domain—the specific area (or domain) of the users' business need that is within the scope of the new system.

"Things" are those items users work with when accomplishing tasks that need to be remembered

Examples of "Things" are products, sales, shippers, customers, invoices, payments, etc.

Two common techniques to identify "things":

- **Brainstorming Technique**
  - Use a checklist of all of the usual types of things typically found and brainstorm to identify domain classes of each type
- **Noun Technique**
  - Identify all of the nouns that come up when the system is described and determine if each is a domain class, an attribute, or not something we need to remember

6

---

---

---

---

---

---

---

---

Introduction  
**Data Requirements**  
 E-R Model  
 Conceptual  
 E-R Syntax  
 Types  
 Business Rules  
 Packaged Models  
 Class Model  
 Domain Model  
 Relationships  
 Security Requirements

## THE PROBLEM DOMAIN

Are there any:

Things

Tangible	Roles Played	Organizational Units	Devices	Sites or Locations	Events
Airplane	Employee	Division	Sensor	Warehouse	Flight
Book	Customer	Department	Timer	Office	Call
Vehicle	Doctor	t	Controller	Factory	Logon
Document	Patient	Section	Machine	Store	Logoff
Form	User	Task Force	Sorter	Desktop	Contract
	Sys Admin	Workgroup	Printer		Purchase
			Container		Order
					Payment

7

---

---

---

---

---

---

---

---

---

---

Introduction  
**Data Requirements**  
 E-R Model  
 Conceptual  
 E-R Syntax  
 Types  
 Business Rules  
 Packaged Models  
 Class Model  
 Domain Model  
 Relationships  
 Security Requirements

## BRAINSTORMING TECHNIQUE

1. Identify a user and a set of use cases
2. Brainstorm with the user to identify things involved when carrying out the use case—that is, things about which information should be captured by the system.
3. Use the types of things (categories) to systematically ask questions about potential things, such as the following:
  1. Are there any tangible things you store information about?
  2. Are there any locations involved?
  3. Are there roles played by people that you need to remember?
4. Continue to work with all types of users and stakeholders to expand the brainstorming list
5. Merge the results, eliminate any duplicates, and compile an initial list

8

---

---

---

---

---

---

---

---

---

---

Introduction  
**Data Requirements**  
 E-R Model  
 Conceptual  
 E-R Syntax  
 Types  
 Business Rules  
 Packaged Models  
 Class Model  
 Domain Model  
 Relationships  
 Security Requirements

## NOUN TECHNIQUE

A technique to identify problem domain classes (things) by finding, classifying, and refining a list of nouns that come up in discussions or documents

Popular technique. Systematic.

Does end up with long lists and many nouns that are not things that need to be stored by the system

Difficulty identifying synonyms and things that are really attributes

Good place to start when there are no users available to help brainstorm

9

---

---

---

---

---

---

---

---

---

---

Introduction  
**Data Requirements**  
 E-R Model  
 Conceptual  
 E-R Syntax  
 Types  
 Business Rules  
 Packaged Models  
 Class Model  
 Domain Model  
 Relationships  
 Security Requirements

## NOUN TECHNIQUE EXAMPLE

Identified noun	Notes on including noun as a thing to store
Accounting	We know who they are. No need to store it.
Back order	A special type of order? Or a value of order status? Research.
Back-order information	An output that can be produced from other information.
Bank	Only one of them. No need to store.
Catalog	Yes, need to recall them, for different seasons and years. Include.
Catalog activity reports	An output that can be produced from other information. Not stored.
Catalog details	Same as catalog? Or the same as product items in the catalog? Research.
Change request	An input resulting in remembering changes to an order.
Charge adjustment	An input resulting in a transaction.
Color	One piece of information about a product item.
Confirmation	An output produced from other information. Not stored.
Credit card information	Part of an order? Or part of customer information? Research.
Customer	Yes, a key thing with lots of details required. Include.
Customer account	Possibly required if an RMO payment plan is included. Research.
Fulfillment reports	An output produced from information about shipments. Not stored.
Inventory quantity	One piece of information about a product item. Research.
Management	We know who they are. No need to store.
Marketing	We know who they are. No need to store.
Merchandising	We know who they are. No need to store.

10

---

---

---

---

---

---

---

---

---

---

Introduction  
**Data Requirements**  
 E-R Model  
 Conceptual  
 E-R Syntax  
 Types  
 Business Rules  
 Packaged Models  
 Class Model  
 Domain Model  
 Relationships  
 Security Requirements

## NOUN TECHNIQUE STEPS

- Using the use cases, actors, and other information about the system— including inputs and outputs—identify all nouns.
  - For the RMO CMS, the nouns might include customer, product item, sale, confirmation, transaction, shipping, bank, charge request, summary report, management, transaction reports, accounting, back order, back order notification, return, return confirmation....
- Using other information from existing systems, current procedures, and current reports or forms, add items or categories of information needed.
  - For the RMO CMS, these might include price, size, color, style, season, inventory quantity, payment method, and shipping address.
- As this list of nouns builds, refine it. Ask these questions about each noun to help you decide whether you should include it:
  - Is it a unique thing the system needs to know about?
  - Is it inside the scope of the system you are working on?
  - Does the system need to remember more than one of these items?

Ask these questions to decide to exclude it:

  - Is it really a synonym for some other thing I have identified?
  - Is it really just an output of the system produced from other information I have identified?
  - Is it really just an input that results in recording some other information I have identified?

Ask these questions to research it:

  - Is it likely to be a specific piece of information (attribute) about some other thing I have identified?
  - Is remembering it really useful if associations change?
- Create a master list of all nouns identified and then note whether each one should be included, excluded, or researched further.
- Review the list with users, stakeholders, and team members and then define the list of things in the problem domain.

11

---

---

---

---

---

---

---

---

---

---

Introduction  
**Data Requirements**  
 E-R Model  
 Conceptual  
 E-R Syntax  
 Types  
 Business Rules  
 Packaged Models  
 Class Model  
 Domain Model  
 Relationships  
 Security Requirements

## MUST DETERMINE:

Requirements Determination Questions for Data Modeling:

- What are subjects/objects of the business?
  - Data entities and descriptions
- What unique characteristics distinguish between subjects/objects of the same type?
  - Primary keys
- What characteristics describe each subject/object?
  - Attributes and secondary keys
- How do you use the data?
  - Security controls and user access privileges
  - Who knows the meaning of the data?
- Over what period of time are you interested in the data?
  - Cardinality and time dimensions
  - Are all instances of each object the same?
- Supertypes, subtypes, and aggregations
  - What events occur that imply associations between objects?
    - Relationships and cardinalities
  - Are there special circumstances that affect the way events are handled?
    - Integrity rules, minimum and maximum cardinalities, time dimensions

12

---

---

---

---

---

---

---

---

---

---

Introduction  
**Data Requirements**  
 E-R Model  
 Conceptual  
 E-R Syntax  
 Types  
 Business Rules  
 Packaged Models  
 Class Model  
 Domain Model  
 Relationships  
 Security Requirements

## DELIVERABLES AND OUTCOME

Entity-relationship (E-R) diagram or UML class diagram

- Entities (or classes) – categories of data, represented as rectangles
- Relationships (or associations) – lines between the entities

Set of entries about data objects to be stored in repository project dictionary, or data modeling software

- Repository links data, process, and logic models of an information system.
- Data elements included in the data flow diagram (DFD) must appear in the data model and vice versa.
- Each data store in a process model must relate to business objects represented in the data model.

13

---

---

---

---

---

---

---

---

---

---

Introduction  
 Data Requirements  
**E-R Model**  
 Conceptual  
 E-R Syntax  
 Types  
 Business Rules  
 Packaged Models  
 Class Model  
 Domain Model  
 Relationships  
 Security Requirements

## CONCEPTUAL DATA MODELING PROCESS

Develop a data model for the current system.

Develop (or purchase) a new conceptual data model that includes all requirements of the new system.

In the design stage, the conceptual data model is translated into a physical design.

Project repository links all design and data modeling steps performed during SDLC.

The E-R model is expressed in terms of:

- Data entities in the business environment.
- Relationships or associations among those entities.
- Attributes or properties of both the entities and their relationships.

14

---

---

---

---

---

---

---

---

---

---

Introduction  
 Data Requirements  
**E-R Model**  
 Conceptual  
 E-R Syntax  
 Types  
 Business Rules  
 Packaged Models  
 Class Model  
 Domain Model  
 Relationships  
 Security Requirements

## ENTITY RELATIONSHIP MODELING

**Key**

ENTITY TYPE — Relationship —

**Cardinalities**

- Mandatory One
- Mandatory Many
- Optional One
- Optional Many

15

---

---

---

---

---

---

---

---

---

---

Introduction  
 Data Requirements  
**E-R Model**  
 Conceptual  
 E-R Syntax  
 Types  
 Business Rules  
 Packaged Models  
 Class Model  
 Domain Model  
 Relationships  
 Security Requirements

## DELIVERABLES AND OUTCOME

**Entity-Relationship data model (E-R model):** a detailed, logical representation of the entities, associations and data elements for an organization or business area

**Entity-relationship diagram (E-R diagram):** a graphical representation of an E-R model

16

---

---

---

---

---

---

---

---

Introduction  
 Data Requirements  
**E-R Model**  
 Conceptual  
 E-R Syntax  
 Types  
 Business Rules  
 Packaged Models  
 Class Model  
 Domain Model  
 Relationships  
 Security Requirements

## E-R VERNACULAR

**Entity:** a person, place, object, event or concept in the user environment about which data is to be maintained

**Entity type:** collection of entities that share common properties or characteristics

**Entity instance:** single occurrence of an entity type

17

---

---

---

---

---

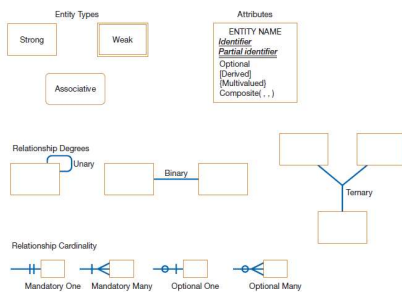
---

---

---

Introduction  
 Data Requirements  
**E-R Model**  
 Conceptual  
 E-R Syntax  
 Types  
 Business Rules  
 Packaged Models  
 Class Model  
 Domain Model  
 Relationships  
 Security Requirements

## E-R VERNACULAR



18

---

---

---

---

---

---

---

---

Introduction  
Data Requirements  
**E-R Model**  
Conceptual  
**E-R Syntax**  
Types  
Business Rules  
Packaged Models  
Class Model  
Domain Model  
Relationships  
Security Requirements

### EXAMPLE: DFD TO E-R

```

    graph LR
      Customer[Customer] --> OS((Order System))
      OS --> SalesRep[Sales Rep]
      OS --> Customer
      Customer <--> OS
  
```

19

---

---

---

---

---

---

---

---

Introduction  
Data Requirements  
**E-R Model**  
Conceptual  
**E-R Syntax**  
Types  
Business Rules  
Packaged Models  
Class Model  
Domain Model  
Relationships  
Security Requirements

### EXAMPLE: DFD TO E-R

```

    graph TD
      Customer[Customer] --> P20((2.0 Process Payments))
      P20 --> D2[D2 Orders]
      D2 --> D1[D1 Customers]
      D1 --> P10((1.0 Process Order))
      P10 --> SalesRep[Sales Rep]
      P10 --> D3[D3 Inventory]
  
```

20

---

---

---

---

---

---

---

---

Introduction  
Data Requirements  
**E-R Model**  
Conceptual  
**E-R Syntax**  
Types  
Business Rules  
Packaged Models  
Class Model  
Domain Model  
Relationships  
Security Requirements

### EXAMPLE: DFD TO E-R

```

    graph LR
      Item[Item] --- Customer[Customer]
      Customer --- Invoice[Invoice]
      Sales[Sales]
  
```

21

---

---

---

---

---

---

---

---

Introduction  
Data Requirements  
**E-R Model**  
Conceptual  
**E-R Syntax**  
Types  
Business Rules  
Packaged Models  
Class Model  
Domain Model  
Relationships  
Security Requirements

## CARDINALITY

	0	0...1	
	1	0...M	
	Many	1...1	
		1...M	

22

---

---

---

---

---

---

---

---

---

---

Introduction  
Data Requirements  
**E-R Model**  
Conceptual  
**E-R Syntax**  
Types  
Business Rules  
Packaged Models  
Class Model  
Domain Model  
Relationships  
Security Requirements

## EXAMPLE: DFD TO E-R

23

---

---

---

---

---

---

---

---

---

---

Introduction  
Data Requirements  
**E-R Model**  
Conceptual  
**E-R Syntax**  
Types  
Business Rules  
Packaged Models  
Class Model  
Domain Model  
Relationships  
Security Requirements

## EXAMPLE: DFD TO E-R TO PHYSICAL DESIGN?

<p style="text-align: center;"><b>Customer</b></p> <p>ID (Integer) Name (varchar 64) Address (varchar 128) Phone1 (varchar 12) Phone2 (varchar 12)</p>	<p style="text-align: center;"><b>Invoice</b></p> <p>ID (Integer) Customer_ID (Integer) Order Date (Date) Ship Date (Date) Order Total (Derived)</p>	
<p style="text-align: center;"><b>Item</b></p> <p>ID (Integer) Name (varchar 64) Quantity (Integer) Cost (Decimal) Retail (Decimal) Supplier (varchar 64)</p>	<p style="text-align: center;"><b>Invoice Line</b></p> <p>ID (Integer) Item_ID (Integer) Invoice_ID (Integer) Quantity (Integer)</p>	<p style="text-align: center;"><b>Relationships</b></p> <p>Customer (1) to Invoice (M) Item (1) to Invoice Line (M)</p>

24

---

---

---

---

---

---

---

---

---

---



Introduction  
Data Requirements  
**E-R Model**  
Conceptual  
E-R Syntax  
**Types**  
Business Rules  
Packaged Models  
Class Model  
Domain Model  
Relationships  
Security Requirements

## NAMING AND DEFINING ENTITY TYPES

An entity type name should be:

- A *singular noun*.
- *Descriptive and specific to the organization*.
- *Concise*.

Event entity type should be named for the *result of the event*, not the activity or process of the event.

25

---

---

---

---

---

---

---

---

Introduction  
Data Requirements  
**E-R Model**  
Conceptual  
E-R Syntax  
**Types**  
Business Rules  
Packaged Models  
Class Model  
Domain Model  
Relationships  
Security Requirements

## NAMING AND DEFINING ENTITY TYPES

An entity type definition:

- Includes a statement of *what the unique characteristic(s) is (are) for each instance*.
- Makes clear *what entity instances are included and not included in the entity type*.
- Often includes a description of *when an instance of the entity type is created or deleted*.

26

---

---

---

---

---

---

---

---

Introduction  
Data Requirements  
**E-R Model**  
Conceptual  
E-R Syntax  
**Types**  
Business Rules  
Packaged Models  
Class Model  
Domain Model  
Relationships  
Security Requirements

## NAMING AND DEFINING ENTITY TYPES

For some entity types the definition must specify:

- *When an instance might change into an instance of another entity type*.
- *What history is to be kept about entity instances*.

27

---

---

---

---

---

---

---

---

- Introduction
- Data Requirements
- E-R Model**
- Conceptual
- E-R Syntax
- Types
- Business Rules
- Packaged Models
- Class Model
- Domain Model
- Relationships
- Security Requirements

## ATTRIBUTES

**Attribute:** a named property or characteristic of an entity that is of interest to the organization

- Naming an attribute: i.e. Vehicle\_ID
- Place its name inside the rectangle for the associated entity in the E-R diagram.

---

---

---

---

---

---

---

---

28

- Introduction
- Data Requirements
- E-R Model**
- Conceptual
- E-R Syntax
- Types
- Business Rules
- Packaged Models
- Class Model
- Domain Model
- Relationships
- Security Requirements

## NAMING AND DEFINING ATTRIBUTES

An attribute name is a *noun* and should be *unique*.  
 To make an attribute name unique and for clarity, *each attribute name should follow a standard format*.  
*Similar attributes of different entity types should use similar but distinguishing names.*

---

---

---

---

---

---

---

---

29

- Introduction
- Data Requirements
- E-R Model**
- Conceptual
- E-R Syntax
- Types
- Business Rules
- Packaged Models
- Class Model
- Domain Model
- Relationships
- Security Requirements

## NAMING AND DEFINING ATTRIBUTES

An attribute definition:

- States what the attribute is and possibly why it is important.
- Should make it clear what is included and what is not included.
- Contains any aliases or alternative names.
- States the source of values for the attribute.

---

---

---

---

---

---

---

---

30

Introduction  
Data Requirements  
**E-R Model**  
Conceptual  
E-R Syntax  
**Types**  
Business Rules  
Packaged Models  
Class Model  
Domain Model  
Relationships  
Security Requirements

## NAMING AND DEFINING ATTRIBUTES

An attribute definition should indicate:

- If a value for the attribute is required or optional.
- If a value for the attribute may change.
- Any relationships that attribute has with other attributes.

31

---

---

---

---

---

---

---

---

---

---

Introduction  
Data Requirements  
**E-R Model**  
Conceptual  
E-R Syntax  
**Types**  
Business Rules  
Packaged Models  
Class Model  
Domain Model  
Relationships  
Security Requirements

## CANDIDATE KEYS AND IDENTIFIERS

**Candidate key:** an attribute (or combination of attributes) that uniquely identifies each instance of an entity type

**Identifier:** a candidate key that has been selected as the unique, identifying characteristic for an entity type

32

---

---

---

---

---

---

---

---

---

---

Introduction  
Data Requirements  
**E-R Model**  
Conceptual  
E-R Syntax  
**Types**  
Business Rules  
Packaged Models  
Class Model  
Domain Model  
Relationships  
Security Requirements

## CANDIDATE KEYS AND IDENTIFIERS

Selection rules for an identifier

- Choose a candidate key that will not change its value.
- Choose a candidate key that will never be null.
- Avoid using intelligent keys.
- Consider substituting single value surrogate keys for large composite keys.

33

---

---

---

---

---

---

---

---

---

---

- Introduction
- Data Requirements
- E-R Model**
- Conceptual
- E-R Syntax
- Types
- Business Rules
- Packaged Models
- Class Model
- Domain Model
- Relationships
- Security Requirements

## OTHER ATTRIBUTE TYPES

**Multivalued attribute:** an attribute that may take on more than one value for each entity instance

**Repeating group:** a set of two or more multivalued attributes that are logically related

34

---

---

---

---

---

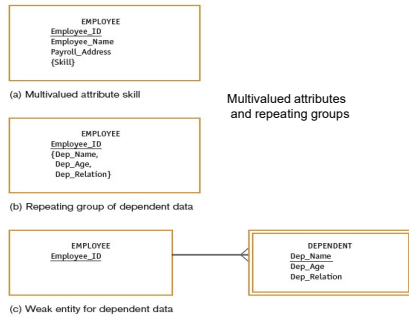
---

---

---

- Introduction
- Data Requirements
- E-R Model**
- Conceptual
- E-R Syntax
- Types
- Business Rules
- Packaged Models
- Class Model
- Domain Model
- Relationships
- Security Requirements

## OTHER ATTRIBUTE TYPES



35

---

---

---

---

---

---

---

---

- Introduction
- Data Requirements
- E-R Model**
- Conceptual
- E-R Syntax
- Types
- Business Rules
- Packaged Models
- Class Model
- Domain Model
- Relationships
- Security Requirements

## OTHER ATTRIBUTE TYPES

**Required attribute:** an attribute that must have a value for every entity instance

**Optional attribute:** an attribute that may not have a value for every entity instance

**Composite attribute:** an attribute that has meaningful component parts

**Derived attribute:** an attribute whose value can be computed from related attribute values

36

---

---

---

---

---

---

---

---

Introduction  
Data Requirements  
**E-R Model**  
Conceptual  
E-R Syntax  
**Types**  
Business Rules  
Packaged Models  
Class Model  
Domain Model  
Relationships  
Security Requirements

## RELATIONSHIPS

**Relationship:** an association between the instances of one or more entity types that is of interest to the organization

**Degree:** the number of entity types that participate in a relationship

37

---

---

---

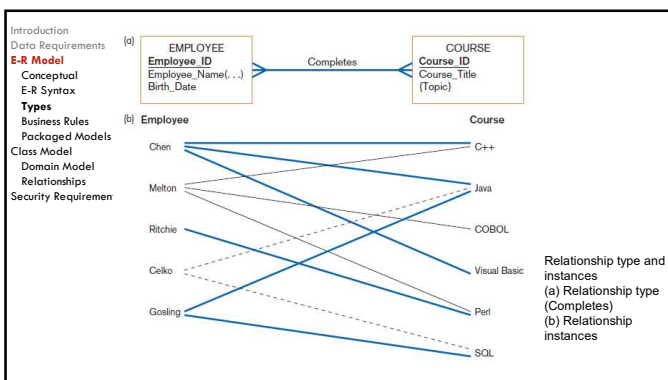
---

---

---

---

---



38

---

---

---

---

---

---

---

---

Introduction  
Data Requirements  
**E-R Model**  
Conceptual  
E-R Syntax  
**Types**  
Business Rules  
Packaged Models  
Class Model  
Domain Model  
Relationships  
Security Requirements

## RELATIONSHIPS

**Unary relationship:** a relationship between the instances of one entity type

- Also called a *recursive relationship*

**Binary relationship:** a relationship between instances of two entity types

- Most common type of relationship encountered in data modeling

**Ternary relationship:** a simultaneous relationship among instances of three entity types

39

---

---

---

---

---

---

---

---

Introduction  
Data Requirements  
**E-R Model**  
Conceptual  
E-R Syntax  
**Types**  
Business Rules  
Packaged Models  
Class Model  
Domain Model  
Relationships  
Security Requirements

## RELATIONSHIPS

**Cardinality:** the number of instances of entity B that can (or must) be associated with each instance of entity A

**Minimum Cardinality**

- The minimum number of instances of entity B that may be associated with each instance of entity A

**Maximum Cardinality**

- The maximum number of instances of entity B that may be associated with each instance of entity A

40

---

---

---

---

---

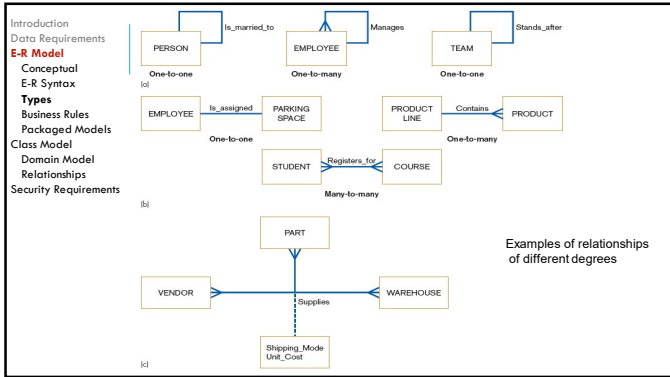
---

---

---

---

---



41

---

---

---

---

---

---

---

---

---

---

Introduction  
Data Requirements  
**E-R Model**  
Conceptual  
E-R Syntax  
**Types**  
Business Rules  
Packaged Models  
Class Model  
Domain Model  
Relationships  
Security Requirements

## RELATIONSHIPS

**Mandatory vs. Optional Cardinalities**

- Specifies whether an instance must exist or can be absent in the relationship

42

---

---

---

---

---

---

---

---

---

---

Introduction  
Data Requirements  
**E-R Model**  
Conceptual  
E-R Syntax  
**Types**  
Business Rules  
Packaged Models  
Class Model  
Domain Model  
Relationships  
Security Requirements

## RELATIONSHIPS

Examples of cardinality constraints

(a) Mandatory cardinalities

(b) One optional, one mandatory cardinality

(c) Optional cardinalities

43

---

---

---

---

---

---

---

---

---

---

Introduction  
Data Requirements  
**E-R Model**  
Conceptual  
E-R Syntax  
**Types**  
Business Rules  
Packaged Models  
Class Model  
Domain Model  
Relationships  
Security Requirements

## NAMING AND DEFINING RELATIONSHIPS

A relationship name is a verb phrase; avoid vague names.

A relationship definition:

- Explains what action is to be taken and possibly why it is important.
- Gives examples to clarify the action.

44

---

---

---

---

---

---

---

---

---

---

Introduction  
Data Requirements  
**E-R Model**  
Conceptual  
E-R Syntax  
**Types**  
Business Rules  
Packaged Models  
Class Model  
Domain Model  
Relationships  
Security Requirements

## NAMING AND DEFINING RELATIONSHIPS

A relationship definition should:

- Explain any optional participation.
- Explain the reason for any explicit maximum cardinality other than many.
- Explain any restrictions on participation in the relationship.
- Explain the extent of history that is kept in the relationship.
- Explain whether an entity instance involved in a relationship instance can transfer participation to another relationship instance.

45

---

---

---

---

---

---

---

---

---

---

- Introduction
- Data Requirements
- E-R Model**
- Conceptual
- E-R Syntax
- Types**
- Business Rules
- Packaged Models
- Class Model
- Domain Model
- Relationships
- Security Requirements

## ASSOCIATIVE ENTITIES

**Associative Entity:** an entity type that associates the instances of one or more entity types and contains attributes that are peculiar to the relationship between those entity instances

The data modeler chooses to model the relationship as an entity type.

46

---

---

---

---

---

---

---

---

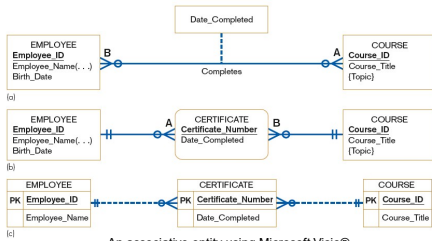
---

---

- Introduction
- Data Requirements
- E-R Model**
- Conceptual
- E-R Syntax
- Types**
- Business Rules
- Packaged Models
- Class Model
- Domain Model
- Relationships
- Security Requirements

## ASSOCIATIVE ENTITIES

An associative entity



47

---

---

---

---

---

---

---

---

---

---

- Introduction
- Data Requirements
- E-R Model**
- Conceptual
- E-R Syntax
- Types**
- Business Rules
- Packaged Models
- Class Model
- Domain Model
- Relationships
- Security Requirements

## REPRESENTING SUPERTYPES AND SUBTYPES

**Subtype:** a subgrouping of the entities in an entity type

- Is meaningful to the organization
- Shares common attributes or relationships distinct from other subgroupings

**Supertype:** a generic entity type that has a relationship with one or more subtypes

48

---

---

---

---

---

---

---

---

---

---



Introduction  
Data Requirements  
**E-R Model**  
Conceptual  
E-R Syntax  
**Types**  
Business Rules  
Packaged Models  
Class Model  
Domain Model  
Relationships  
Security Requirements

## REPRESENTING SUPERTYPES AND SUBTYPES

```

    erDiagram
        PATIENT ||--o{ RESPONSIBLE_PHYSICIAN : "is cared for"
        PATIENT ||--o{ OUTPATIENT : "is a"
        PATIENT ||--o{ RESIDENT_PATIENT : "is a"
        RESIDENT_PATIENT ||--o{ BED : "is assigned"
        PATIENT {
            string Patient_ID PK
            string Patient_Name
            string Admit_Date
        }
        RESPONSIBLE_PHYSICIAN {
            string Physician_ID PK
        }
        OUTPATIENT {
            string Checkback_Date
        }
        RESIDENT_PATIENT {
            string Date_Discharged
        }
        BED {
            string Bed_ID PK
        }
    
```

49

---

---

---

---

---

---

---

---

---

---

Introduction  
Data Requirements  
**E-R Model**  
Conceptual  
E-R Syntax  
**Types**  
Business Rules  
Packaged Models  
Class Model  
Domain Model  
Relationships  
Security Requirements

## REPRESENTING SUPERTYPES AND SUBTYPES

**Business Rules for Supertype/subtype Relationships:**

- **Total specialization** specifies that each entity instance of the supertype must be a member of some subtype in the relationship.
- **Partial specialization** specifies that an entity instance of the supertype does not have to belong to any subtype, and may or may not be an instance of one of the subtypes.
- **Disjoint rule** specifies that if an entity instance of the supertype is a member of one subtype, it cannot simultaneously be a member of any other subtype.
- **Overlap rule** specifies that an entity instance can simultaneously be a member of two (or more) subtypes.

50

---

---

---

---

---

---

---

---

---

---

Introduction  
Data Requirements  
**E-R Model**  
Conceptual  
E-R Syntax  
**Types**  
Business Rules  
Packaged Models  
Class Model  
Domain Model  
Relationships  
Security Requirements

## REP

Example of supertype/subtype hierarchy

```

    erDiagram
        PERSON ||--o{ EMPLOYEE : "is a"
        PERSON ||--o{ ALUMNUS : "is a"
        PERSON ||--o{ STUDENT : "is a"
        EMPLOYEE ||--o{ FACULTY : "is a"
        EMPLOYEE ||--o{ STAFF : "is a"
        STUDENT ||--o{ GRADUATE_STUDENT : "is a"
        STUDENT ||--o{ UNDERGRAD_STUDENT : "is a"
        PERSON {
            string SSN PK
            string Name
            string Address
            string Gender
            string Date_of_Birth
        }
        EMPLOYEE {
            string Salary
            string Date_Hired
        }
        ALUMNUS {
            string Degree_Year
            string Designation
            string Date
        }
        STUDENT {
            string Major_Dept
        }
        FACULTY {
            string Rank
        }
        STAFF {
            string Position
        }
        GRADUATE_STUDENT {
            string Test_Score
        }
        UNDERGRAD_STUDENT {
            string Class_Standing
        }
    
```

51

---

---

---

---

---

---

---

---

---

---

Introduction  
Data Requirements  
**E-R Model**  
Conceptual  
E-R Syntax  
Types  
**Business Rules**  
Packaged Models  
Class Model  
Domain Model  
Relationships  
Security Requirements

## BUSINESS RULES

**Business rules:** specifications that preserve the integrity of the logical data model

- Captured during requirements determination
- Stored in CASE repository as they are documented

52

---

---

---

---

---

---

---

---

Introduction  
Data Requirements  
**E-R Model**  
Conceptual  
E-R Syntax  
Types  
**Business Rules**  
Packaged Models  
Class Model  
Domain Model  
Relationships  
Security Requirements

## BUSINESS RULES

Four basic types of business rules are:

- *Entity integrity:* unique, non-null identifiers
- *Referential integrity constraints:* rules governing relationships between entity types
- *Domains:* constraints on valid values for attributes
- *Triggering operations:* other business rules that protect the validity of attribute values

53

---

---

---

---

---

---

---

---

Introduction  
Data Requirements  
**E-R Model**  
Conceptual  
E-R Syntax  
Types  
**Business Rules**  
Packaged Models  
Class Model  
Domain Model  
Relationships  
Security Requirements

## DOMAINS

**Domain:** the set of all data types and values that an attribute can assume

Several advantages

- Verify that the values for an attribute are valid
- Ensure that various data manipulation operations are logical
- Help conserve effort in describing attribute characteristics

54

---

---

---

---

---

---

---

---

Introduction  
Data Requirements  
**E-R Model**  
Conceptual  
E-R Syntax  
Types  
Business Rules  
Packaged Models  
Class Model  
Domain Model  
Relationships  
Security Requirements

## TRIGGERING OPERATIONS

**Trigger:** an assertion or rule that governs the validity of data manipulation operations such as insert, update and delete

55

---

---

---

---

---

---

---

---

Introduction  
Data Requirements  
**E-R Model**  
Conceptual  
E-R Syntax  
Types  
Business Rules  
Packaged Models  
Class Model  
Domain Model  
Relationships  
Security Requirements

## TRIGGERING OPERATIONS

Includes the following components:

- **User rule:** statement of the business rule to be enforced by the trigger
- **Event:** data manipulation operation that initiates the operation
- **Entity Name:** name of entity being accessed or modified
- **Condition:** condition that causes the operation to be triggered
- **Action:** action taken when the operation is triggered

56

---

---

---

---

---

---

---

---

Introduction  
Data Requirements  
**E-R Model**  
Conceptual  
E-R Syntax  
Types  
Business Rules  
Packaged Models  
Class Model  
Domain Model  
Relationships  
Security Requirements

## PACKAGED DATA MODELS

Packaged data models provide generic models that can be customized for a particular organization's business rules.

**Universal data models** are templates for

- one or more core subject areas such as:
  - Customers, products, accounts, documents
- and/or core business functions such as:
  - Purchasing, accounting, receiving, etc.

57

---

---

---

---

---

---

---

---

Introduction  
Data Requirements  
**E-R Model**  
Conceptual  
E-R Syntax  
Types  
Business Rules  
**Packaged Models**  
Class Model  
Domain Model  
Relationships  
Security Requirements

## PACKAGED DATA MODELS

**Industry-specific data models** are designed to be used by organizations within specific industries.

These models are based on the premise that data model patterns for organizations are similar within a particular industry.

58

---

---

---

---

---

---

---

---

Introduction  
Data Requirements  
**E-R Model**  
Conceptual  
E-R Syntax  
Types  
Business Rules  
**Packaged Models**  
Class Model  
Domain Model  
Relationships  
Security Requirements

## BENEFITS OF DATABASE PATTERNS AND PACKAGED DATA MODELS

**Dramatically reduced implementation times and costs**

- Provides a starting point for asking requirements questions

**Higher-quality models**

- Represent "best practice" data modeling techniques and data model components whose quality often exceeds that which can be achieved by internal development teams, given typical organizational pressures

59

---

---

---

---

---

---

---

---

Introduction  
Data Requirements  
E-R Model  
Conceptual  
E-R Syntax  
Types  
Business Rules  
Packaged Models  
**Class Model**  
Domain Model  
Relationships  
Security Requirements

## BENEFITS OF DATABASE PATTERNS AND PACKAGED DATA MODELS

*Functional models represent system behavior*

Structural models represent system objects and their relationships:

- People
- Places
- Things

60

---

---

---

---

---

---

---

---

Introduction  
Data Requirements  
E-R Model  
Conceptual  
E-R Syntax  
Types  
Business Rules  
Packaged Models  
**Class Model**  
Domain Model  
Relationships  
Security Requirements

## DOMAIN CLASSES

**Attribute**— describes one piece of information about each instance of the class

- Customer has first name, last name, phone number

**Identifier or key**

- One attribute uniquely identifies an instance of the class. Required for data entities, optional for domain classes. Customer ID identifies a customer

**Compound attribute**

- Two or more attributes combined into one structure to simplify the model. (E.g., address rather than including number, street, city, state, zip separately). Sometimes an identifier or key is a compound attribute.

61

---

---

---

---

---

---

---

---

---

---

Introduction  
Data Requirements  
E-R Model  
Conceptual  
E-R Syntax  
Types  
Business Rules  
Packaged Models  
**Class Model**  
Domain Model  
Relationships  
Security Requirements

## ATTRIBUTES AND VALUES

**Class is a type of thing. Object is a specific instance of the class. Each instance has its own values for an attribute.**

All Customers have attributes:		Each customer has a value for each attribute:		
Customer ID	101	102	103	
First Name	John	Dagny	Henry	
Last Name	Galt	Taggart	Reardon	
Home Phone	555-9182	423-1298	874-1297	
Work Phone	555-3425	423-3419	874-8546	

62

---

---

---

---

---

---

---

---

---

---

Introduction  
Data Requirements  
E-R Model  
Conceptual  
E-R Syntax  
Types  
Business Rules  
Packaged Models  
**Class Model**  
Domain Model  
Relationships  
Security Requirements

## ASSOCIATIONS AMONG THINGS

**Association**— A naturally occurring relationship between classes (UML term)

```

graph LR
    A[Order # 1043] -- "is placed by" --- B((Mr. Smith))
    B -- "works in" --- C[Accounting Department]
    D[Red Shirt] -- "contains" --- E[Jeans]
  
```

63

---

---

---

---

---

---

---

---

---

---

Introduction  
Data Requirements  
E-R Model  
  Conceptual  
  E-R Syntax  
Types  
Business Rules  
Packaged Models  
**Class Model**  
Domain Model  
Relationships  
Security Requirements

### JUST TO CLARIFY...

Called **association** on class diagram in UML

- Multiplicity is term for the number of associations between classes: 1 to 1 or 1 to many
- We are emphasizing UML in this unit

Called **relationship** on ERD in database class

- Cardinality is term for number of relationships in entity relationship diagrams: 1 to 1 or 1 to many

Associations and Relationships apply in two directions

- Read them separately each way
- A customer places an order
- An order is placed by a customer

64

---

---

---

---

---

---

---

---

Introduction  
Data Requirements  
E-R Model  
  Conceptual  
  E-R Syntax  
Types  
Business Rules  
Packaged Models  
**Class Model**  
Domain Model  
Relationships  
Security Requirements

### MINIMUM AND MAXIMUM MULTIPLICITY

Associations have minimum and maximum constraints

- Minimum is zero
- The association is optional
- Minimum is at least one
- The association is mandatory

Mr. Jones has placed no order yet, but there might be many placed over time → Multiplicity is zero or more-optional relationship

A particular order is placed by Mr. Smith. There can't be an order without stating the customer. → Multiplicity is one and only one-mandatory relationship

An order contains at least an item, but could have many items → Multiplicity is one or more-mandatory relationship

65

---

---

---

---

---

---

---

---

Introduction  
Data Requirements  
E-R Model  
  Conceptual  
  E-R Syntax  
Types  
Business Rules  
Packaged Models  
**Class Model**  
Domain Model  
Relationships  
Security Requirements

### TYPES OF ASSOCIATIONS

Binary Association

- Associations between exactly two different classes
- Course Section includes Student
- Members join Club

Unary Association (recursive)

- Associations between two instances of the same class
- Person married to person
- Part is made using parts

Ternary Association (three)

N-ary Association (between n)

66

---

---

---

---

---

---

---

---

Introduction  
Data Requirements  
E-R Model  
Conceptual  
E-R Syntax  
Types  
Business Rules  
Packaged Models  
**Class Model**  
Domain Model  
Relationships  
Security Requirements

## SEMANTIC NET

Shows instances and how they are linked  
- Example:

67

---

---

---

---

---

---

---

---

---

---

Introduction  
Data Requirements  
E-R Model  
Conceptual  
E-R Syntax  
Types  
Business Rules  
Packaged Models  
**Class Model**  
Domain Model  
Relationships  
Security Requirements

## DOMAIN CLASS MODEL DIAGRAM

- Class**
  - A category of classification used to describe a collection of objects
- Domain Class**
  - Classes that describe objects in the problem domain
- Class Diagram**
  - A UML diagram that shows classes **with attributes and associations** (plus methods if it models software classes)
- Domain Model Class Diagram**
  - A class diagram that only includes classes from the problem domain, not software classes so no methods

68

---

---

---

---

---

---

---

---

---

---

Introduction  
Data Requirements  
E-R Model  
Conceptual  
E-R Syntax  
Types  
Business Rules  
Packaged Models  
**Class Model**  
Domain Model  
Relationships  
Security Requirements

## DOMAIN CLASS NOTATION

Domain class has no methods  
Class name is always capitalized  
Attribute names are not capitalized and use camelback notation (words run together and second word is capitalized)

69

---

---

---

---

---

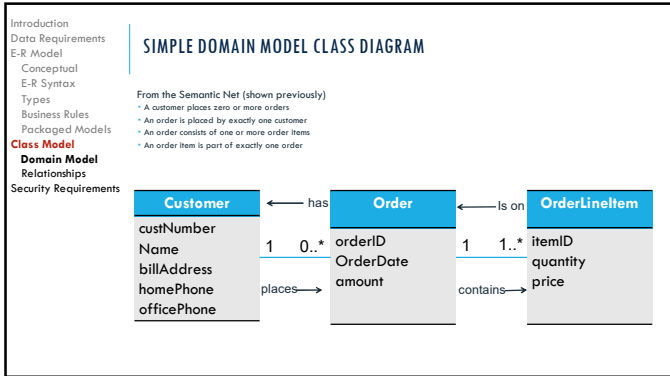
---

---

---

---

---



70

---

---

---

---

---

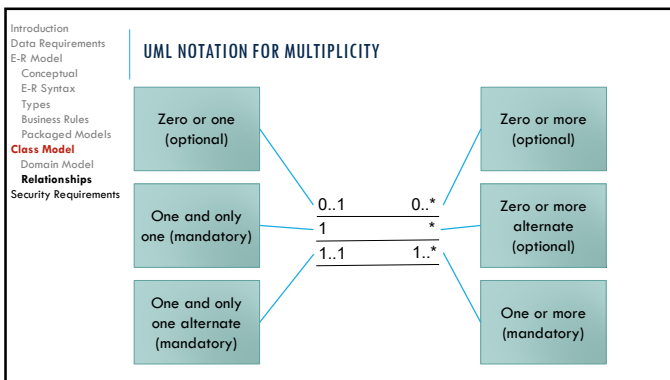
---

---

---

---

---



71

---

---

---

---

---

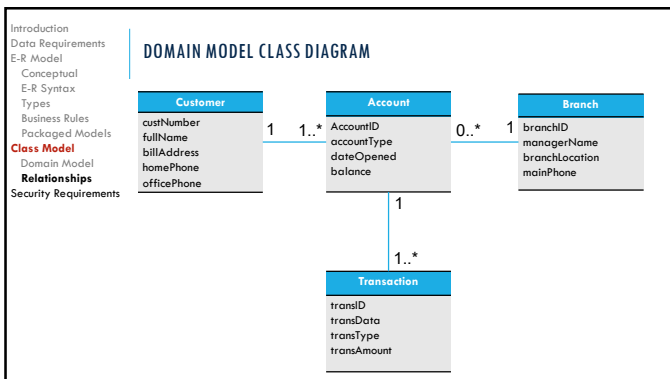
---

---

---

---

---



72

---

---

---

---

---

---

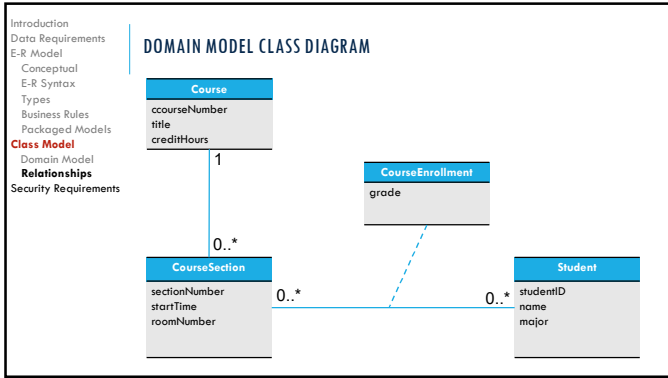
---

---

---

---





73

---

---

---

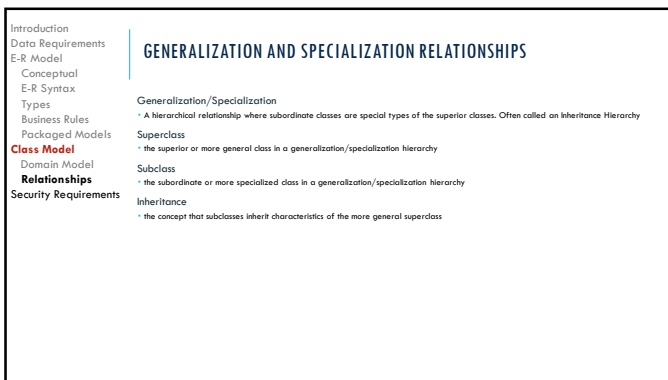
---

---

---

---

---



74

---

---

---

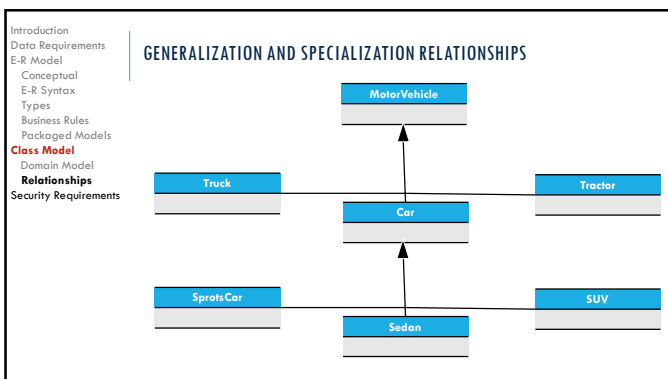
---

---

---

---

---



75

---

---

---

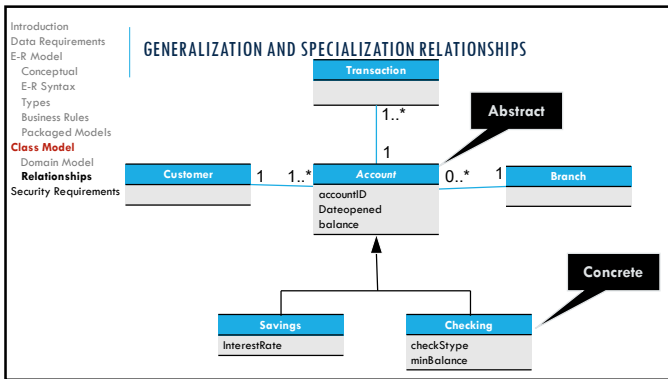
---

---

---

---

---



76

---

---

---

---

---

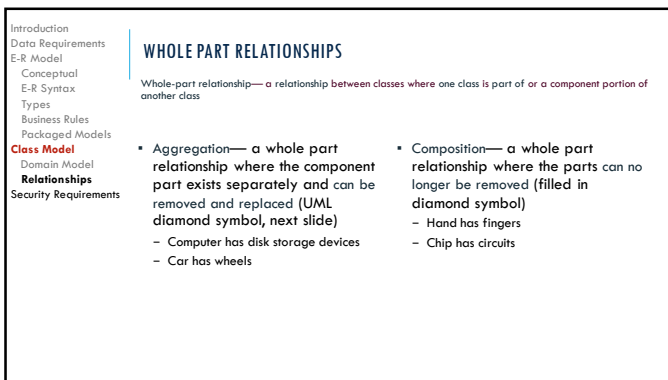
---

---

---

---

---



77

---

---

---

---

---

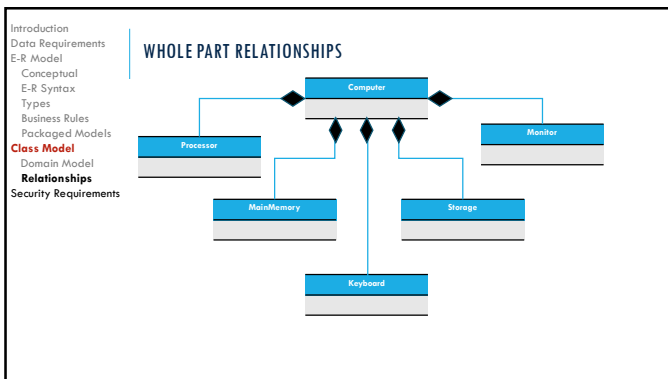
---

---

---

---

---



78

---

---

---

---

---

---

---

---

---

---

- Introduction
- Data Requirements
- E-R Model
  - Conceptual
  - E-R Syntax
  - Types
  - Business Rules
- Packaged Models
- Class Model**
- Domain Model
- Relationships**
- Security Requirements

### ONE FINAL NOTE ON RELATIONSHIPS...

There are actually three types of relationships in class diagrams

- Association Relationships
  - These are associations discussed previously, just like ERD *relationships*
- Whole Part Relationships
  - One class is a component or part of another class
- Generalizations/Specialization Relationships
  - Inheritance

Try not to confuse relationship with association

---

---

---

---

---

---

---

---