



MENTAL HEALTH & Unemployment Analysis

By: Reuben Ratnum, Adeline Porter, Alec
Buttner, & Tanya Nguyen

Starting Scenario

Question

What is the correlation between depression and unemployment statuses of workers?



Importance

- Finding the the real impact that depression can have on people in different factors
- Employers may be able to implement programs to help employees

Data Source

Source

- Excel
- Paid Research Survey
(Conducted via Survey Monkey)

From Where

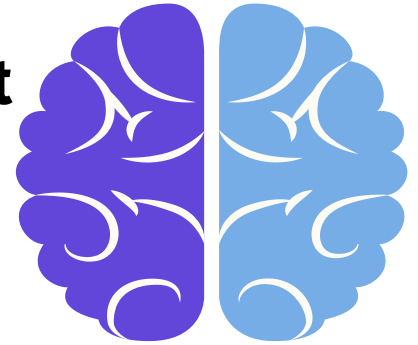
- Source is from Kaggle
- Author: Michael Corley
- Sample Size: 334
Respondents; 80 of which
reported no mental health
conditions.

Key Elements

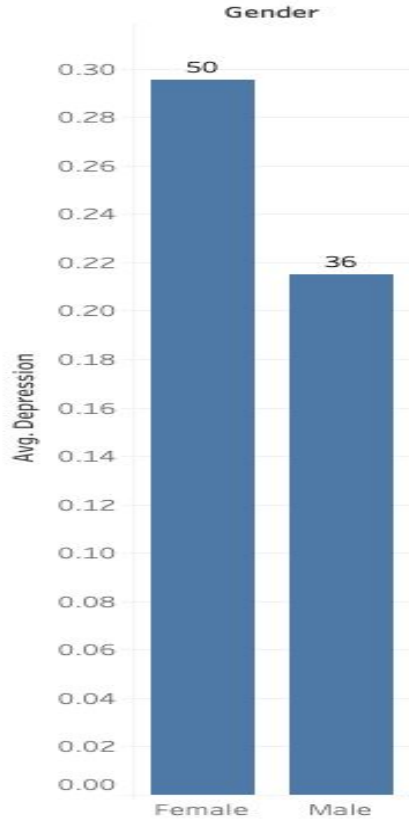
- Various Questions
- Variety of Mental illnesses
- Different Categories (age,
gender, education, etc.)



Gender Comparison of Unemployment



Comparison Gender

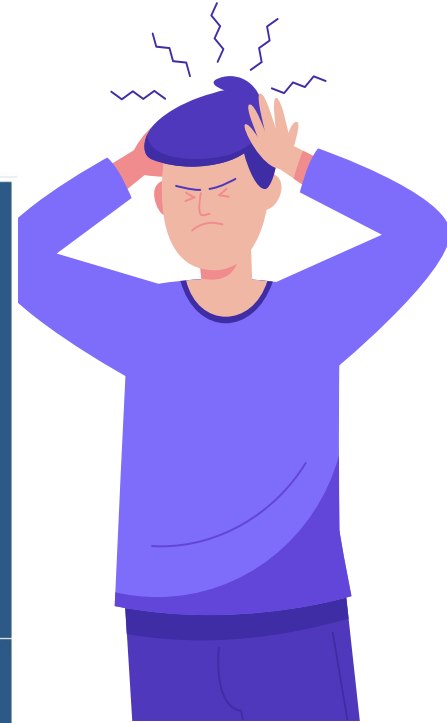
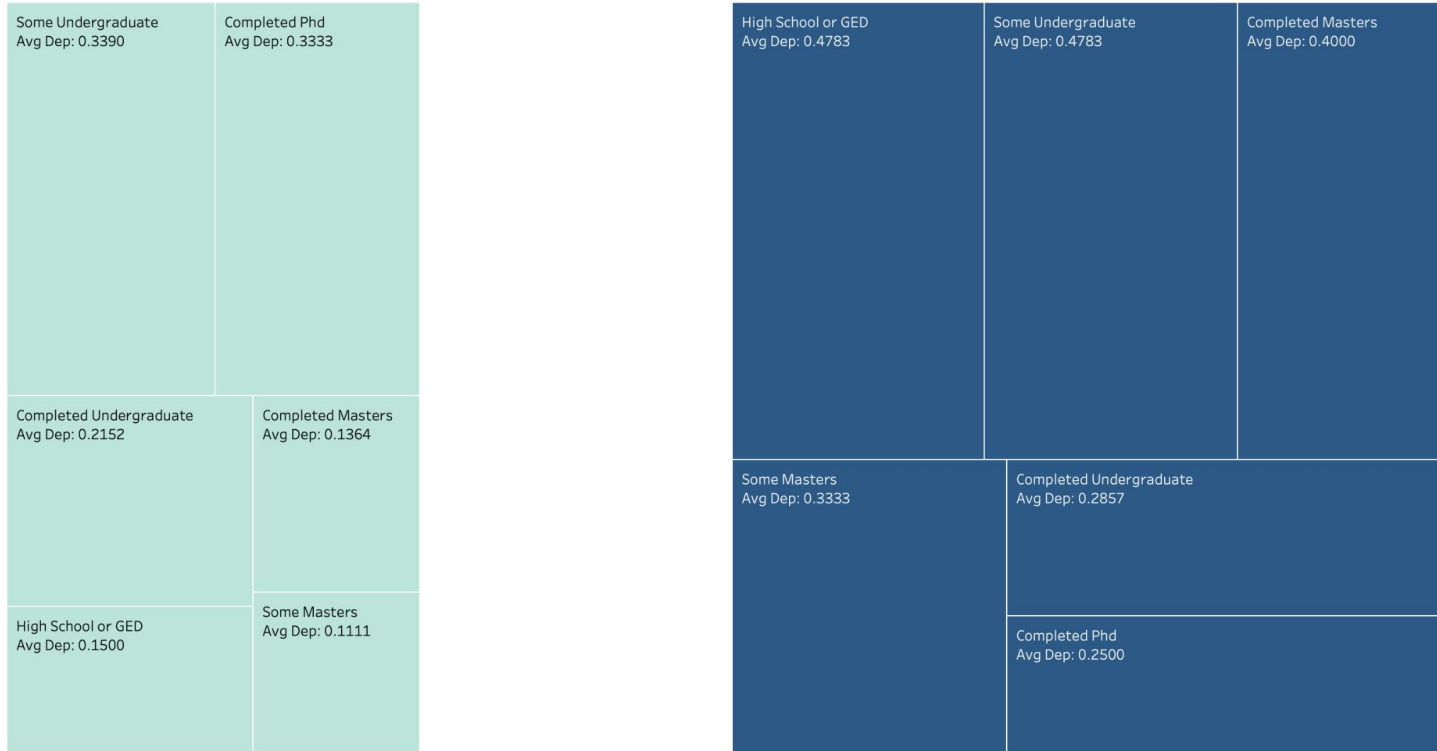


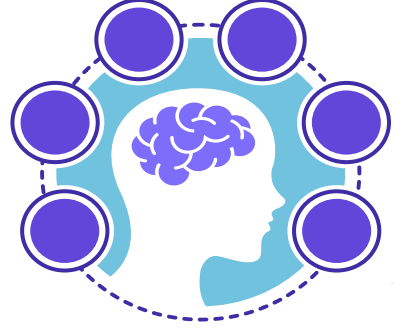
MENTAL HEALTH INFOGRAPHICS

I am unemployed

Employed

Unemployed



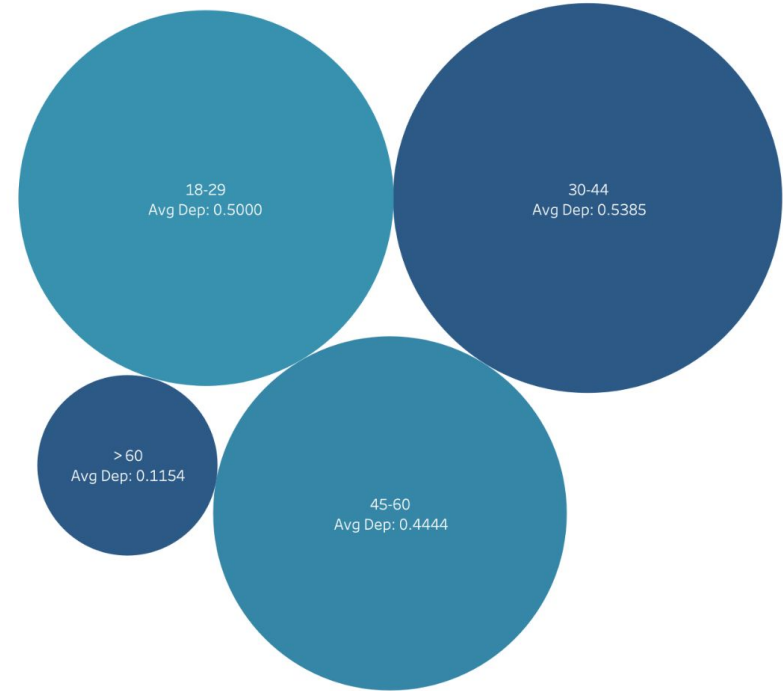
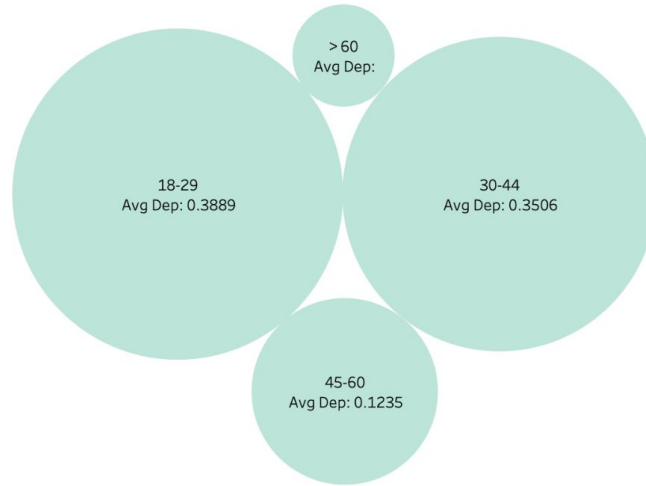


Breakdown: Ages

Employed

I am unemployed

Unemployed



analysis and results



Women are diagnosed with depression **MORE OFTEN THAN MEN** on average



An **UNEMPLOYED** person has a **HIGHER CHANCE** of getting depression in comparison to someone **EMPLOYED**



Depression levels are **LOW** among those who are **EMPLOYED** and have **OBTAINED HIGHER EDUCATION** in their life span



It is true across **ALL AGES** that the employed person is **LESS** likely to **DEVELOP DEPRESSION** than the unemployed person

CONCLUSION

Overall, we are able to conclude that there is somewhat of a correlation between employment status and level of depression.



significant increase in the avg. depression rate for ages 45-60.



females tend to be more unemployed and have a higher depression rate



There is a higher depression rate for those with a high school degree, masters' or pursuing their masters'

WORKS CITED



- **“Mental Illness: NAMI Report Deplores 80% Unemployment Rate; Model Legislation Proposed.”**

National Alliance on Mental Illness, Jan. 2014. Press Release.

<https://www.nami.org/Press-Media/Press-Releases/2014/Mental-Illness-NAMI-Report-Deplores-80-Percent-Un>

- **Corley, Michael. 2019-04-02. “Unemployment and Mental Health Survey.”**

Version 2.0. Retrieved April 2021 from

<https://www.kaggle.com/michaelacorley/unemployment-and-mental-illness-survey>